



Vol. 35 No. 2
January 2009

NEWSLETTER OF THE CPA/SCP

SECTION ON WOMEN & PSYCHOLOGY
SECTION: FEMMES ET PSYCHOLOGIE

www.cpa.ca/swap

WHAT'S INSIDE

REGULAR FEATURES:

2008-2009 Executive	2
2008-2009 Provincial Reps	4
Column: Coordinator's Message	5
Column: Editor's Message	6
Column: Feminist Review	7
Executive Showcase	8
Provincial Rep's Showcase	11

SPECIAL FEATURES:

Feminist Mentoring Nominations	12
Call for SWAP Student Awards	13
Conference Review	14
Recently Defended	15

STAYING CONNECTED:

Notices	16
Members' Recent Publications	22
Upcoming Conferences/Workshops	22
Call for Papers/Abstracts	28
Student Award Forms	34
SWAP Application Form	38

2008-2009 EXECUTIVE

COORDINATOR



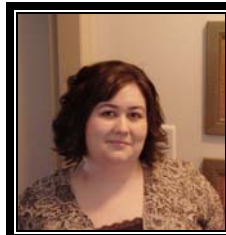
Teresa Janz
Analysis and Special Projects Section
Social and Aboriginal Statistics Division
Statistics Canada
Tel: (613) 841-8345
E-mail: jeff.teresa@sympatico.ca

TREASURER/SECRETARY



Noreen Stuckless
Department of Psychology
Rm. 291 BSB, 2700 Keele St.
York University
Toronto ON M3J 1P3
Tel: (416) 736-2100 ext 66231
Fax: (416) 736-5814
E-Mail: stuckles@yorku.ca

WEB MAVEN



Michelle McCarron
Organizational & Social
Psychology Research Unit
Department of Psychology
University of Regina
3737 Wascana Parkway
Regina, SK S4S 0A2
E-Mail: michelle.mccarron@accesscomm.ca

PAST COORDINATOR



Charlene Senn
Department of Psychology
University of Windsor
401 Sunset Avenue
Windsor, ON N9B 3P4
Tel: (519) 253-4232 ext. 2255
Fax: (519) 973-7021
E-Mail: csenn@uwindsor.ca

CHAIR, STATUS OF WOMEN COMMITTEE (SWC)



Erika Horwitz
Registered Psychologist
Tel: (778) 227-7742
E-mail: horwitze@shaw.ca

LIST COORDINATOR:



Meredith Kimball
Women's Studies and Psychology
Simon Fraser University
Burnaby, BC V5A 1S6
Phone: 604-222-2861
E-mail: kimball@sfu.ca

NEWSLETTER EDITOR



Shannon Ellis
Department of Psychology
University of Guelph
Guelph, ON N1G 2W1
E-mail: sellis@uoguelph.ca

GRADUATE STUDENT REP



Heidi Klett
Psychology Department,
Carleton University
1125 Colonel By Dr.
Ottawa, ON K1S 5B6
Tel: (613) 820-8562
E-mail: heidiklett@yahoo.ca

DIVISION 35 (SPW) LIAISON



Charlene Senn
Department of Psychology
University of Windsor
401 Sunset Avenue
Windsor, ON N9B 3P4
Tel: (519) 253-4232 ext. 2255
Fax: (519) 973-7021
E-Mail: csenn@uwindsor.ca

2008-2009 EXECUTIVE

NOMINATIONS COORDINATOR



Sandra Pyke
Department of Psychology
York University
4700 Keele St.,
Toronto, ON M3J 1P3
Tel: (905) 881-2825
Fax: (905) 762-0459
Email: spyke@yorku.ca

UNDERGRADUATE STUDENT REPS



Laura Hambleton
Mount Saint Vincent University
166 Bedford Highway
Halifax, NS B3M 2J6
Email:
laurajillhambleton@hotmail.com



Jessica McCutcheon
University of New Brunswick
Email: d4pcr@unb.ca

STUDENT PAPER & TRAVEL AWARDS COORDINATOR



E.B. Brownlie
Child, Youth, and Family
Programme
Centre for Addiction and Mental
Health
250 College Street, first floor,
Toronto, ON, M5T 1R8
Tel: (416) 535-8501, ext. 4062
Fax: (416) 979-4996.
E-mail: eb_brownlie@camh.net

ABSTRACT REVIEW COORDINATOR



Maria Gurevich
Department of Psychology
and Justice Studies
Ryerson University
350 Victoria Street
Toronto, ON M5B 2K3
Tel: (416) 979-5000 ext. 7570
Fax: (416) 979-5273
E-mail: mgurevic@ryerson.ca

MEMBERSHIP COORDINATOR



Brenda Bettridge
Psychological Services
Ottawa Carleton District School
Board
133 Greenbank Rd
Nepean, On K2H 6L3
Tel: (613) 596 8211 ex 8466
Fax: (613) 596 8797
E-mail: dakota@hawk.igs.net

CPA BOARD LIAISON
To Be Announced

2008-2009 PROVINCIAL REPS

ALBERTA



Lynn Sloane
Sloane Psychological Services Inc.
1218-10 Ave. SE
Calgary, AB T2G 0W7
Tel: (403) 262-5340
E-Mail: sloanelm@shaw.ca

SASKATCHEWAN



Linda McMullen
Department of Psychology
9 Campus Drive
University of Saskatchewan
Saskatoon, SK S7N 5A5
Tel: (306) 966-6666
E-mail: linda.mcmullen@usask.ca

ONTARIO



Brenda Bettridge
Psychological Services
Ottawa Carleton District School Board
133 Greenbank Rd
Nepean, On K2H 6L3
Tel: (613) 596 8211 ex 8466
Fax: (613) 596 8797
E-mail: dakota@hawk.igs.net

QUEBEC



Olga Favreau
Psychologie
Université de Montréal
CP 6128 SUCC A
Montréal, QC H3C 3J7
E-Mail: favreauo@psy.umontreal.ca

NOVA SCOTIA



Joanne Gallivan
Dean of Research,
University College of Cape Breton
PO Box 5300
Sydney, NS B1P 6L2
E-mail: Joanne.Gallivan@cbu.ca

PRINCE EDWARD ISLAND



Colleen MacQuarrie
Psychology Department
University of Prince Edward Island
550 University Ave., Charlottetown, PEI
C1A 4P3
Tel: (902) 566-0617
Fax: (902) 628-4359
E-mail: cmacquarrie@upei.ca

BRITISH COLUMBIA

(Position vacant)

MANITOBA

(Position vacant)

NEW BRUNSWICK

(Position vacant)

NEWFOUNDLAND

(Position vacant)

YUKON & NORTHWEST TERRITORIES:

(Position vacant)



COORDINATOR'S MESSAGE

Coordinator's Message Submitted by Teresa Janz

Dear SWAP members:

The fall has been an extremely busy time for me, as I am sure it has been for many of you. I look forward to a less busy New Year, and to achieving more of a work-life balance. I am already learning a lot in this new role and want to thank everyone who continues to contribute to SWAP!

This year the Canadian Psychological Association's 70th Annual Convention will be held at the Fairmont Queen Elizabeth Hotel, Montréal, Québec, June 11-13, 2009. Looking forward to seeing you there!

I have some great CPA 2009 conference news. Dr. Elizabeth Church, our 2008 Distinguished Member, has agreed to do our SWAP Keynote address in Montreal in June. Her talk is titled, *Reading Self Help: How Mothers Engage with Parenting Books*. In her abstract for her talk, Elizabeth informs us that readers of psychological self-help books are mostly women who are often portrayed as "unreflective dupes". She is going to debunk this myth about women. We will also hear more about how people make meaning of the information they obtain from self-help books. It will be interesting to hear more about this research approach and how to apply these findings in psychological practice. For all these reasons, I think this talk will be of interest to all our members!

This year we plan to continue our tradition of having our SWAP reception following the keynote address. This has worked very well to attract a large number of students and other SWAP members and supporters.

We are searching for a volunteer to organize a SWAP Institute for CPA--so one of the most important goals of CPA in Montreal will be to find a volunteer for this role. This is not an onerous task because we still have a great resource from past conferences--Suzanne Cooper. She is available to share information with the incoming volunteer. If you are interested in this position please contact me (jeff.teresa@sympatico.ca). One example of a theme that has been proposed by our members is: "*Integrating Diversity into Psychological Research and Practice: Are we leaving others behind?*" We are certainly open to other themes that would be interesting for our SWAP members.

We also do not have a SWAP nominated CPA Invited Speaker this year but we have already begun to look for a speaker for the CPA conference in 2010. We have received several recommendations from SWAP members that we will approach.

To round out the planning for the conference, our two annual awards are the SWAP Distinguished Member award and the Feminist Mentoring Award. Sandra Pyke is the Nomination Coordinator for the former and our Graduate Student Representative, Heidi Klett, takes care of the latter. For more information on the awards and past award winners, please go to the SWAP website listed above or contact spyke@yorku.ca or heidiklett@yahoo.ca.

I wish you all a peaceful holiday and a wonderful New Year!

Best Regards,
Teresa Janz
SWAP Coordinator



EDITOR'S MESSAGE

HAPPY NEW YEAR!! I hope everyone had a wonderful holiday season! Another year and another new issue of the SWAP Newsletter. The Executive Showcase continues in this issue, with three members featured: Charlene Senn (page 8), Noreen Stuckless (page 9) and Meredith Kimball (page 10). As well, this issue begins a series of Provincial Rep's Showcases, with our representative from Alberta, Lynn Sloane, on page 11.

Of special interest in this issue is the call for Feminist Mentoring Award Nominations (page 12) and the SWAP Student Awards information (page 13) and application forms (pages 34-37). As well, the Newsletter continues to offer you Jennifer Boisvert's Feminist Review (page 7), a Conference Review (page 14), information about a Recently Defended Master's Thesis (page 15), and an abstract for a Member's Recent Publication (page 22). There are several Notices on pages 16-21. Of particular interest are notices informing members about the CPA Fact Sheets, and information regarding the SWAP-sponsored publication 'Pathways, Bridges and Havens: Psychosocial Determinants of Women's Health', edited by Joanne Gallivan & Suzanne Cooper. Finally, there is information about several upcoming Conferences/Workshops (pages 22-27) and Calls for Papers/Abstracts (pages 28-33).

I truly hope that everyone enjoys the Newsletter. I welcome any comments/suggestions on what you would like to see in upcoming Newsletters. If you have an idea for a special feature or a regular column, please contact me. As well, I welcome any other submissions that you think SWAP members would be interested in reading. Relevant calls for papers, abstracts, nominations, applications, fellowship and employment opportunities, and notices, as well as information about up-and-coming conferences or special issues, are always welcome.

The deadline for submissions is April 30th, 2009.

Shannon Ellis, Newsletter Editor, sellis@uoguelph.ca



****A little mental escape from the long, cold, snowy days!!****



FEMINIST REVIEW

***Addressing Violence Against Women and Achieving the Millennium Development Goals.* (2005). Geneva, Switzerland: World Health Organization, 45 pp., ISBN: 92-4-159381-4.**

**Reviewed by
Jennifer A. Boisvert, Ph.D., R. Psych. (AB), L. Psych. (CA)**

This document examines violence against women and girls as an obstacle to an international agenda focused on health and wellness. There has been a growing recognition of violence against women and girls as a public health and human rights issue. This document highlights the connection between prevention initiatives and Millennium Development Goals (MDGs) developed by the World Health Organization (WHO). It aims to clarify the links between violence against women and girls, the MDGs, to translate these links into action, and, finally, to encourage readers to implement recommendations for achieving MDGs.

This document's four sections range from 2 to 10 pages. The introduction outlines the document's aim and scope with a synopsis of the literature on violence against women and girls across the globe. It identifies the relevance of this issue to an international development agenda.

The second section more closely examines intersections between violence against women and the MDGs. Eight MDGs are discussed in terms of how violence against women and girls fits under the umbrella of each. The view that violence is "one of the most blatant manifestations of gender inequality" (p. 1) is argued throughout. Initiatives to reduce and prevent such gender inequality are highlighted.

The third section concludes that the MDGs will not be achieved, nor will an international agenda focused on health and wellness be advanced, if violence against women and girls fails to be addressed. It suggests a need for greater representation of women in policy- and decision-making, voicing the reality that "...women and men live different lives, and that women's lives often include violence for no other reason than that they are women" (p. 27).

The fourth section makes eight recommendations for developing and implementing comprehensive approaches to reduce and/or prevent violence. These recommendations highlight policies, programs, initiatives and strategies in health, educational and political spheres, under the umbrella of the eight MDGs.

Overall, this document achieves its aim. It increases recognition of women and girls' individual experiences violence on a global level, emphasizing the role of MDGs in reducing and/or preventing this public health and human rights issue. It enlists the reader to be an advocate and activist in creating global change for women and girls. The recommendations provide a platform for developing and implementing prevention initiatives. This document offers an excellent synopsis of literature on violence against women and girls. It could be used as a primer in undergraduate classes examining gender inequalities or health disparities, e.g., psychology of women, feminism, or sociology of health.

This document would be significantly strengthened with a more detailed description of how the MDGs came into being and how attaining the MDG indicators outlined in the Annex would be monitored and evaluated.



EXECUTIVE SHOWCASE

Charlene Y. Senn, PhD is a Professor of Psychology and Women's Studies at the University of Windsor. She supervises graduate students within the Applied Social Psychology stream of Windsor's PhD program. Over the years her research has focused on different aspects of feminist psychology with a primary focus on violence against women and girls including pornography's effects on women and sexual coercion and assault. For the past four years, Charlene has been moving toward the difficult task of more directly applying feminist knowledge and theory to try to make changes in women's lives. With the help of a number of wonderful feminist graduate assistants, she has been developing and evaluating a theoretically sound rape resistance education program to attempt to increase first year university women's ability to emotionally and physically fight off men's attempts to sexually coerce or assault them. In the future, she hopes to conduct a randomized controlled trial in several universities to test the effectiveness of an enhanced version of the program that adds emancipatory sexuality education to strengthen women's knowledge of their own sexual desires and rights. She is also reworking the program to be applicable to high school girls and will evaluate its effectiveness for younger women.

Charlene has been at the University of Windsor since 1992 and it has been a productive home for a feminist. In 1999, a group of feminist graduate students in psychology started the Feminist Research Group and Charlene was their faculty advisor for nine years. They are celebrating their 10th annual multidisciplinary feminist student conference in May 2009. In 2005, Charlene was a recipient of an Ontario Women's Health Council Career Award (2005-2008) and with the assistance of this funding formed the multidisciplinary Health Research Centre for the Study of Violence against Women at the University of Windsor. When she first started at the University of Windsor, she was one of only two researchers on campus who did research related to violence against women. Now, there is a group of nearly 20 faculty and graduate students, who share ideas and findings, collaborate and support each other.

Charlene 'became' a feminist through taking the first women's studies courses offered when she was an undergraduate psychology student at the University of Calgary and seeing her life experiences through that new lens. She volunteered as a birth control and abortion counsellor and, following graduation with her BSc, worked frontline at the Calgary Women's Emergency Shelter. She was also a founding member of the Calgary Women's Health Collective and active in other local feminist activities related to women's health and violence against women. Her paid work at the battered women's shelter was very valuable in helping her to redirect her life. It showed her that being a counsellor was not for her. It also raised many questions about the role of pornography in women's lives and in the abuse of women by their male partners that could only be answered by research and going back to university! And so a social psychologist was born (constructed!).

Charlene was very lucky to find great feminist mentors in Lorraine Radtke at the University of Calgary (MSc) and Sandra Pyke at York University (PhD). Their supervisory support and challenging feedback were very important to her development as a researcher and teacher. But her connection to a changing and evolving community of feminist friends who challenged her not to lose her radical roots, not to write only in academic speak, and to not lose sight of who the research was supposed to benefit, have continued to keep her grounded. Activism and volunteer work in the communities where she lives, supervision of funny, smart, and challenging feminist students, and involvement in SWAP (past-Coordinator, past Student Travel and Paper Award Coordinator) also help with this. Charlene lives very happily in the mild climate of Windsor with her partner of 23 years, Meredith, and three cats and a dog.



EXECUTIVE SHOWCASE

Noreen Stuckless is the Undergraduate Program Director and sessional faculty member in the Department of Psychology at York University. She also holds appointments of Assistant Professor at the University of Toronto and Associate Scientific Staff in the Department of Psychiatry at Mount Sinai Hospital. She has been the Secretary-Treasurer of SWAP for a number of years.

A Toronto native, she started her studies later than most, in her late 30's, after her youngest daughter started school full-time. With the encouragement and help of her husband and daughters, Noreen completed her Undergraduate degree in Psychology and Women's Studies and her Ph.D. in Social Psychology at York University.

Noreen became a feminist due to the influence and example of many of her professors and friends in the Women's Studies program and she was fortunate to have had the experience of working with such fine women as Esther Greenglass and Sandra Pyke in the Graduate Program and in SWAP. As a matter of fact, it was at Sandra Pyke's suggestion that she take her SWAP position.

Her interest in feminist matters directed a great deal of her research. Her dissertation looked at families whose child was murdered or killed by a drunk driver. Noreen conducted SSHRC post-doctoral studies in the Department of Psychiatry, at the University of Toronto, under the Supervision of Dr. Brenda Toner, looking at reasons inhibiting women from leaving abusive relationships and what they face after they make the decision to leave. Research in a similar area resulted in a book *Mediating and Negotiating Marital Conflict* co-authored with Desmond Ellis. A great deal of the research conducted in her time as a Research Scientist for seven years in the Department of Psychiatry at Women's College Hospital was conducting studies with first-time parents.

The main body of work that Noreen has conducted over the years has been in scale development and related studies. A number of these have been published. For her M.A., she and her supervisor, the late Richard Goranson, developed the Vengeance Scale, a measure of attitudes towards the appropriateness of taking revenge for perceived personal wrongs. She worked with Brenda Toner and colleagues on developing and publishing a Cognitive Scale for patients with functional bowel disorders and is currently working with her team on a Gender Role Socialization Scale for Women

Over the last number of years Noreen has been working with Dr. Mary Jane Esplen at Mt. Sinai and Toronto General Hospitals on the development of measures of self-concept related to genetics. Two articles have just been published -for *BRCA1/2 Gene Carriers* and for *Adult HNPCC Carriers*. The scales have been translated and are being used in a number of countries.

A main interest and pleasure continues to be teaching. Noreen teaches *Psychology of Women* and fourth year seminars in Social Psychology at York and *Sex Roles and Behaviour* at the University of Toronto. She rejoices when students indicate an emerging realization of the inequities and triumphs related to women's lives like her three feminist daughters have. She hopes the same will be true for her grandchildren (with whom she and her husband Wally are happily spending more and more time).



EXECUTIVE SHOWCASE

Meredith Kimball grew up in Nebraska in the US. After graduating from Macalester College in St. Paul, Minnesota, Meredith completed a PhD in Developmental Psychology at the University of Michigan. In 1970 she moved to Canada to take a job as an assistant professor of Psychology at the University of British Columbia. While there she became involved in feminism and was one of the founders of the Women's Studies program at UBC. This was an exciting intellectual and political journey, however, the powers that be were not impressed and Meredith was denied tenure at UBC.

Having decided to stay in Vancouver even if it meant leaving academia, Meredith was fortunate to be able to move to a joint appointment in Women's Studies and Psychology at Simon Fraser University in 1976. She worked there until she retired in 2004. Over the years she taught courses in child development, social issues, adult development and aging, psychology of gender, introduction to women's studies, female roles in contemporary society, psychoanalytic feminisms, history of western feminisms, and theories of gender.

Meredith's research moved from empirical work on gender similarities and differences in achievement, to a theoretical focus on the uses and misuses of theories of gender similarities and differences and the history of women in psychology and psychoanalysis. A major focus of her career was administrative work, including chairing committees in Psychology, chairing Women's Studies, and coordinating SWAP.

Meredith's two main honours were receiving the SWAP Distinguished Member Award and the Association for Women in Psychology Distinguished Publication Award for her book, *Feminist Visions of Gender Similarities and Differences*. In retirement she has taken up quilting and snowshoeing and she is enjoying the privilege of living at a more relaxed pace.



PROVINCIAL REP'S SHOWCASE

Lynn Sloane knew she wanted to study psychology from the first time she heard of the discipline in grade 11 (times were different then); although it took considerably longer for her to figure out that she had the abilities to continue into graduate school and clinical work. Lynn did her undergraduate degree at Trent University and then did an Honours B.Sc. while working for six years at Trent as a teaching assistant for the first year psychology course. This allowed her to apply for graduate work at University of Saskatchewan where she completed the Masters and then Ph.D. in clinical psychology, with a focus on attribution of responsibility for sexual assault.

Lynn's introduction to Alberta was her one-year residency at Alberta Hospital Edmonton, and from there she was recruited for a position at an agency in Calgary that provided services to families affected by child sexual abuse. This half-time position allowed Lynn to develop a private practice. In less than a year, she was in private practice full time and now, 21 years later, she still loves her work and her practice. She has been mentored and nurtured and encouraged and partnered by wonderful people and chosen family over the years. One of the lovely things about her practice is that she has been able to bring her dogs to work for the past 9 years, and occasionally therapy overlaps with suggestions about dog-training.

Lynn has been an active member of Women in Psychology, Calgary, and with Beth Balshaw edited the newsletter for many years. She was working on a book some years ago for women dealing with relationship issues with women, the topic of one of the journaling therapy groups she facilitated, but when her partner of 23 years left her, she lost confidence in her credibility and left the fledgling book. Happily, she fell in love again at 54, and it may be time to open "The Book" file again. Last year she decided that part of her retirement plan is to add a day to the weekend every five years so she started with Fridays, and when she is 60 she will add another day...

CALL FOR FEMINIST MENTORING AWARD NOMINATIONS

NOMINATIONS FOR THE 2009 SECTION OF WOMEN AND PSYCHOLOGY (SWAP) FEMINIST MENTORING AWARD

The purpose of the SWAP Mentoring Award is to recognize feminist supervisors who have promoted the advancement of their students through exceptional mentoring. Nominations are invited from students and recent graduates who wish to acknowledge a professor who promotes feminist scholarship, teaching, and practice and who has been pivotal to their graduate/post-graduate school experience. Nomination letters should describe how the mentor has been outstanding in supporting, encouraging and promoting your feminist research and facilitating your (as well as other students') professional, personal, and career development.

Nomination Criteria:

- Graduate and post-graduate students and recent graduates are invited to submit a nomination.
- Nominations should include:
 - 1) Cover page with students' and nominee's names, mailing and email addresses, phone numbers, university, department, and program of study.
 - 2) 1-2 page letter describing how the nominee's mentoring enhanced your graduate/post-graduate education and professional and personal development (e.g., helped develop your talents, facilitated joint and single authored publications, acted as a role model, etc). Explain your relationship with your nominee and how she/he has distinguished her/himself as a mentor for you. Feel free to share specific stories and anecdotes as appropriate. Nomination letters from multiple students is encouraged.

Submission deadline: March 1, 2009

Please send submissions electronically to **Heidi Klett at: heidiklett@yahoo.ca**.

Winners will receive a plaque honouring their contribution to students. The award will be presented during the SWAP Annual General Meeting in Montreal, Quebec during the 2009 Canadian Psychological Association (CPA) Convention. Ideally both student and nominee will be present.

SWAP STUDENT AWARDS

SWAP Student Awards

SWAP offers two awards to support students' presenting at the Canadian Psychological Association convention. The Student Paper Award offers a \$500 award for a student-authored paper of special relevance to women that best represents our mandate:

- 1) to promote research, practice and education about and by women in psychology;
- 2) to make feminist research and practice visible within CPA and psychological communities more generally;
- 3) to represent a collective of psychologists working to eliminate sexism, racism, classism, heterosexism and homophobia, ageism, and ableism.

Students who enter the SWAP student paper award competition receive one year free membership in SWAP.

SWAP also offers \$200 travel bursaries for students presenting at the 2009 Annual Convention of the Canadian Psychological Association. Priority is given to students who will be presenting papers or posters on topics of particular relevance to women and/or feminism.

Please spread the word to eligible students!

Application Deadline: Friday, April 17, 2009.

For more information, contact **E.B. Brownlie (SWAP student awards coordinator)** at **EB_Brownlie@camh.net**

Please note:

The application forms for the SWAP Student Paper Award and for the Travel Bursaries for Students appear on pages 34 – 37 of this newsletter in both English and French. Please print these pages and post them where students will read them.



CONFERENCE REVIEW

5th Annual International Congress on Women, Work, & Health: Toward Decent and Healthy Jobs for Women, October 27 – 31, 2008, Zacatecas, Mexico By Kate Sheese, History & Theory of Psychology, York University

The 5th Annual International Congress on Women, Work, & Health: Toward Decent and Healthy Jobs for Women was held in Zacatecas, Mexico in October of 2008. The congress took a multi-disciplinary approach, offering talks and discussion forums by academics from a variety of disciplines such as psychology, anthropology, sociology, and labour studies. The congress also featured an impressive variety of relevant art exhibits in the form of documentaries, photography, and dance. Congress organizers were successful in making the event inclusive and accessible, not only to academics, but to community organizations and labourers themselves by offering dozens of scholarships and free transportation for the eight-hour journey from Mexico City to Zacatecas. The congress was organized around seven themes including, the labour market, non-remunerated work, labour conditions, public and private policies, and rights and justice.

Some of the highlights included Mabel Burin's (Program in Gender and Subjectivity at the University of Business and Social Sciences [UCES] of Buenos Aires) keynote address entitled, *Gender and depression: The glass ceiling and glass borders in women's professional careers*; Rachel Cox and Katherine Lippel's (University of Ottawa) presentation, *Sex, power and psychological harassment at work*; and Ofelia Becerril Quintana's (Centre of Rural Studies at El Colegio de Michoacán) presentation, *Transnational women's work and the health of Mexican migrants in Canada*. Burin's address explored the necessity for new theoretical work on the concept of the glass ceiling women have been seen to encounter in their professional careers to include a concept of "glass (national) borders", particularly for women in the global south in an era of globalization and increased labour migration. Cox and Lippel explored the usefulness of the relatively new concept of psychological harassment in protecting women workers from manifestations of power imbalances between men and women. Becerril discussed the deplorable working conditions for women who migrate from Mexico to Canada to work on farms and explored how these women construct and negotiate transnational, liminal identities.

Highlights from the art exhibits included Marta Alcocer's documentary, *Angelina la Partera* (Angelina the Midwife), which received an honourable mention in the congress' video documentary contest; Maya Goded's photography exhibit, *La Linea*, which captures the daily life of women living on the Mexico-U.S. border and depicts their vulnerability to violence, extreme poverty, and HIV; and Tania Dávila's dance, *Erudita Pasión*, choreographed by Silvia Unzueta and based on the life and literary work of Sister Juana Inés de la Cruz (1651-1695).

Although speakers came from a wide range of different academic disciplines, it would have been interesting to see more of an inter-disciplinary approach emphasized within specific presentations, rather than simply across talks and panels. It would have been especially good to see more of this among those from the discipline of psychology who, for the most part, took a more traditional empirical and quantitative approach. Nonetheless, having participants from a variety of disciplines and different parts of the world and with issues being presented in a wide range of modalities contributed to notably rigorous and innovative discussion.

RECENTLY DEFENDED

Abuse in Same-sex Relationships: An Exploration of Barriers to Help-seeking in Rural and Urban Canada

Melissa St. Pierre, M.A.
University of Windsor
Supervisor: Dr. Charlene Y. Senn
stpier4@uwindsor.ca

Abuse in same-sex relationships exists at significant rates, warranting attention from researchers. However, research on the help-seeking behaviours of rural and urban victims of same-sex partner abuse in Canada is lacking. Using online survey methodology, this project explored two different barriers to help-seeking for victims of same-sex partner abuse: access to general (e.g., general counselor) and same-sex specific (e.g., gay/lesbian domestic violence program) services, and experiences of minority stress (degree of outness, experiences of discrimination, and ethnic minority group status). The findings suggest that additional resources for GLBT victims of same-sex partner abuse are needed, especially in rural areas in Canada. Degree of outness and experiences of past discrimination were found to have an impact on willingness to seek help and efforts toward help-seeking and/or number of times help was sought. Additionally, other contextual factors were found to influence the help-seeking process (e.g., commitment to staying with one's abusive partner; fear of exposing the partner or the self to a homophobic/ heterosexist/racist system).

Thank you to this student for submitting her recently defended work. If you have recently defended your work (past 6 months), please send a short abstract (about 200-300 words), your university affiliation and the name of your supervisor to the Newsletter editor at sellis@uoguelph.ca.

NOTICES

**CIHR TRAVEL AWARDS COMPETITION
FOR GRADUATE STUDENTS AND POSTDOCTORAL FELLOWS
DEADLINE: FEBRUARY 16, 2009**

CIHR's Institute of Gender and Health (IGH) is sponsoring a travel awards competition for graduate students and postdoctoral fellows working on topics related to gender, sex and health. IGH will award successful candidates with up to \$1,000 to help cover the costs of presenting their own research at conferences. The deadline for the current funding competition is *February 16, 2009*. Further information about the program and application forms (in English and in French) are available here:

IGH Travel Awards for Students and Post-Doctoral Fellows
<http://www.cihr-irsc.gc.ca/e/36330.html>

Bourses de voyage de l'ISFH pour étudiants et postdoctorants
<http://www.cihr-irsc.gc.ca/f/36330.html>

**CPA FACT SHEETS: 2008 REVIEWED AND REVISED PROCEDURES
K.R. Cohen Ph.D., Executive Director
Canadian Psychological Association**

As is well known to the membership of CPA's Clinical Psychology Section, CPA has published a series of fact sheets for some time on a diverse number of topics related to mental health, mental disorders and psychological assessment and intervention. The fact sheet initiative was born out of a conversation some years ago between Drs. Lorne Sexton and John Service and members of CPA's Clinical section went on to author many of them.

The fact sheets are well accessed and a sterling example of knowledge transfer and public education. They are intended to provide a clear and succinct overview of a psychological disorder or condition. Over time, however, it became clear that the CPA had to refine its policies and procedures for ensuring that the fact sheets were current, covered a broad array of relevant mental health topics, and discussed a representative array of psychological knowledge and evidence-based interventions.

Accordingly, in response to membership feedback and in collaboration with section members, Head Office has established a new set of procedures for reviewing and revising fact sheets. This development has been made possible in no small measure through the leadership of CPA President, Dr. Catherine Lee, and the dedication and hard work of many Clinical Psychology Section members.

Facts sheets may be initiated by any section of CPA, by the Board of Directors of CPA, by CPA's Head Office or by any member of CPA. Fact sheets are typically 1 to 2 pages in length, written in either English or French and in accessible language. The topic of every fact sheet will be a mental disorder, condition or issue. Relying upon the relevant research literature, the fact sheet will describe the disorder, condition or issue, as well as the evidence-based ways in which it is assessed, diagnosed, treated and/or managed. Each fact sheet will highlight evidence-based psychological interventions and offer links to

resources when possible (e.g. agencies or websites providing further information or referrals for treatment). The foregoing description of fact sheet “how to’s” will be posted on CPA’s website and available through CPA’s Director of Communications, Linda McPhee at communications@cpa.ca

All proposed fact sheets or proposals for fact sheets will also be submitted to CPA’s Director of Communications, Linda McPhee. Ms McPhee will provide guidance to authors about the development of a fact sheet and will do a first edit of each submission to ensure consistency in length and language among all fact sheets and to ensure that information is clear and accessible to the public.

Chairs of all CPA sections will then be notified that a proposed fact sheet will be posted on a CPA portal for section review. Sections will be invited to have one representative review the proposed fact sheet, using a rating sheet provided, and to submit their feedback to CPA Head Office within 4 weeks. After 4 weeks, all feedback received by Head Office will be sent to the author for review. In the event that there is substantive disagreement between the author and section feedback (e.g. an author disagrees with a reviewer about the indication of a particular diagnostic criteria or treatment recommendation), the fact sheet and feedback will be sent to a committee composed of CPA’s Directors of Science, Practice and Education and Training. The decision of that committee will be binding. However, an author who disagrees with the committee’s decision, and the ultimate content of the fact sheet, can choose not to be named as its author.

The primary author of each fact sheet will be named and acknowledged but CPA will retain corporate authorship of each fact sheet. All fact sheets will have a shelf life of 3 years at which time the primary author will be invited to update the fact sheet. After the primary author has either undertaken or deferred the need for an update, the fact sheet will once again be posted on the CPA Portal and CPA’s Section Chairs will be invited to have a representative submit a review.

Head Office is hopeful that this revised procedure will allow for a fair, timely and responsive process that continues to enable CPA to provide excellent information to the public on psychological topics. Feedback from sections about the success of the revised procedure will be solicited, likely via an electronic survey after a year’s time.

SWAP-SPONSORED PUBLICATION SCHEDULED FOR JUNE 2009

Cape Breton University Press will launch ‘Pathways, Bridges and Havens: Psychosocial Determinants of Women’s Health’, edited by Joanne Gallivan & Suzanne Cooper, at the CPA Annual Convention in June. The book consists of nine chapters based on presentations at the 2008 SWAP Pre-convention Institute, including the keynote address. The papers cover a range of topics, but all describe recent research and theory on the complex interplay between physical and psychological well-being, and impacts of the broad determinants of health, including social and structural factors, on women’s health and wellness. List price for the book is \$23.95, but we hope to arrange a special discount for SWAP members. As additional information become available, it will be shared via SWAPNet and the Newsletter.

**ARE YOU INTERESTED IN REVIEWING MANUSCRIPTS THAT HAVE BEEN
SUBMITTED TO *PSYCHOLOGY OF WOMEN QUARTERLY*?**

When Associate Editors or I look for reviewers for a submitted paper, we usually try to find three people who bring different backgrounds and expertise to the process. Some reviewers are long-time contributors to PWQ; others have specific areas of relevant expertise; and others *may* be novice reviewers.

Whatever your qualifications (beyond holding an advanced degree in psychology), if you are interested, serving as a ad hoc reviewer gives seasoned researchers a way to give back to our field and fledgling researchers ways to hone their research skills and build their own credentials (we draw on our pool of successful ad hoc reviewers to build our editorial board so serving as an ad hoc reviewer is a good way to get into the editorial pipeline).

We have just opened our new web-based system for submitting and tracking manuscripts so our pool of ad hoc reviewers will be maintained electronically. If you would like to be added to our list of potential reviewers, please send us a note at: pwq@uakron.edu.

We will follow up with instructions for how to start a user account on Manuscript Central, and when you register, we'll then know to assign you a Reviewer designation. When we receive a manuscript that looks like a good fit, we'll invite you to review it so signing up commits you only to the possibility of receiving invitations.

If you have any questions, don't hesitate to call or email us. And, thanks in advance for supporting PWQ, the quality of which relies on the strength of our peer review process.

Jan Yoder
Incoming Editor, PWQ
Jessica Headley
Assistant Editor
(330) 972 – 2829
pwq@uakron.edu

NEW TASK FORCE REPORTS

**Resilience in African American Children and Adolescents &
Disseminating Evidence-Based Practice for Children & Adolescents**

APA's Children, Youth, and Families Office is pleased to announce the release of two new task force reports. Both reports were received by the Council of Representatives during Convention. Please contact me at eandoh@apa.org in order to request hard copies. Please spread the word to your fellow colleagues.

Resilience in African American Children and Adolescents: A Vision for Optimal Development
Report of the Task Force on Resilience and Strength in Black Children and Adolescents

In this report, the Task Force on Resilience and Strength in Black Children and Adolescents encourages a paradigm shift from an emphasis on risk to exploring the complex interactive process of resilience in African American youth. The task force offers a bold new vision of thriving optimal development in African American youth in the contexts of their peers, families, schools, and communities within the following domains:

- * Identity development
- * Emotional development
- * Social development
- * Cognitive development
- * Physical health and development

The report also offers recommendations to the field on how to transform its approach to African American children and youth in the areas of research, practice, education, and policy. The report is available online at www.apa.org/pi/cyf/resilience.html.

Disseminating Evidence-Based Practice for Children and Adolescents: A Systems Approach to Enhancing Care

Report of the Task Force on Evidence-Based Practice with Children and Adolescents

This report addresses the unique challenges for practitioners in developing, strengthening, and disseminating evidence-based practice (EBP) for children, adolescents, and their families. The report adheres to the 2005 APA policy statement on Evidence-Based Practice in Psychology, which calls for "the integration of the best available research with clinical expertise in the context of patient characteristics, culture, and preferences."

The report covers:

- * a brief history and the key assumptions of EBP
- * developmental considerations for children and adolescents
- * the critical issues affecting the dissemination and implementation of EBP
- * an approach to practice that consists of observation, inquiry, and evaluation
- * recommendations for research, education, practice, and policy

The report is available online at <http://www.apa.org/pi/cyf/evidence.html> and www.apa.org/pi/cyf/evidence.html.

Thanks very much,
Efua Andoh

Manager, CYF Programs
Children, Youth, and Families Office
Public Interest Directorate
American Psychological Association
750 First St, NE
Washington, DC 20002-4242
Tel: [202-336-6045](tel:202-336-6045)
Fax: [202-336-6040](tel:202-336-6040)
E-mail: <<mailto:eandoh@apa.org>> eandoh@apa.org
Website: <<http://www.apa.org/pi/cyf>> www.apa.org/pi/cyf

**ATTENTION SWAP STUDENT MEMBERS
SHOWCASE YOUR RESEARCH IN THE NEWSLETTER**

STUDENT RESEARCH: This is a column where students can submit an abstract about any research they have recently conducted (or are conducting) relevant to women and psychology. This is a great way to let members know what research is being conducted by students and has the potential for assisting students with valuable networking opportunities. If you are a SWAP student member (or you supervise a student) and you would like to showcase relevant research, please submit a short abstract (about 200-300 words), the university affiliation, email contact information and the name of the student's supervisor to the Newsletter Editor at sellis@uoguelph.ca.

**ATTENTION SWAP MEMBERS
ARE YOU HAVING PROBLEMS FINDING AN ANSWER FOR A PROBLEM OR
A QUESTION REGARDING YOUR RESEARCH?**

RESEARCH THINK TANK: This is a chance for members to obtain assistance from other SWAP members regarding such things as finding elusive references, methodological queries, assistance solving sampling problems, and technological advice. If you are conducting research, or considering a new research project, and you have a problem or question that is stumping you, consider tapping into the wealth of knowledge and research experience of SWAP members. Just email your question or problem to the Newsletter Editor (sellis@uoguelph.ca) and I will send it out to the members via swap-net. Members can send their responses to the Editor and I will forward them to the enquiring member. As well, I will put the questions/problems and the members' replies in the next Newsletter. This column has the potential to provide members with a valuable research resource for current and future research projects.

FUTURE SWAP NEWSLETTER SUBMISSIONS

The next Newsletter will be printed in May 2009. I would like to continue enhancing the Newsletter in upcoming issues. As such, I would welcome submissions for the following columns:

1. **MEMBER'S RECENT PUBLICATIONS:** This column is for members to highlight their recent publications. If you have published an article/book/book chapter in the last year this is your chance to let the SWAP members know about it. Please submit the reference and a 250-500 word abstract of your publication to me. If you would like to submit something longer, please email me and I'll be happy to make special arrangements.
2. **METHODOLOGICAL REVIEW:** If you have read or written an article using a research method that you think is particularly interesting and/or innovative, or has been used in an innovative fashion (e.g., to access a difficult to access population, administered in a unique way, etc.), please consider writing a review of that article. The research itself does not have to be specific to women, psychology or feminism, but if it is that is definitely a bonus! The idea is to highlight research methodologies that may be useful to members when they are developing new research projects. For example (but not limited to), discourse analysis, conversation analysis, client representative case study, structural equation modeling, a multiple regression conducted in a unique way, mixed methods, etc. If you have any questions about what to include in the review, please feel free to contact me.

3. **CONFERENCE REVIEWS:** If you have attended a conference since the last Newsletter and there were presentations that you think would be of interest to our members, please consider writing a brief review (250-500 words) of the conference/presentation(s). This includes any presentations that you may have made at a recent conference. Please include the author(s) of the research, the name of the project, the professional affiliation of the author(s), and the name of the conference where this research was presented.
4. **UPCOMING CONFERENCES:** If you are aware of an upcoming conference that you think the other members would like to know about, please email me the details of the conference.
5. **RECENTLY DEFENDED DISSERTATIONS & THESES:** If you have a student or you are student who has recently defended a dissertation or thesis (in the last year), please have the student send me a short abstract (about 200-300 words), the university affiliation and the name of the student's supervisor.
6. **FELLOWSHIPS OR JOB OPPORTUNITIES:** If you are aware of any fellowships or job opportunities that would be of interest to our members, please send me the details of them.
7. **CALL FOR PAPERS/ABSTRACTS:** If you have received a call for papers/abstracts for conferences and/or publications please send me the details.

Thank you for your assistance in enhancing the SWAP Newsletter! If you have suggestions for any additional columns you think would be interesting to have in the Newsletter, please let me know. I am always open to suggestions!! If you have any questions about submissions to any of the columns listed above please feel free to contact me.

DEADLINE FOR SUBMISSIONS FOR MAY'S NEWSLETTER IS APRIL 30TH, 2009

SWAP E-MAIL LIST

Our e-mail list (swap-net@sfu.ca) is designed to send messages out only if they are sent by a member of the list. This is what prevents the many spam messages from reaching you. Any message sent to the list by a non-member comes only to me as manager of the list. It is important to remember that you are not listed by your name on the swap-net list, but by your e-mail address. What this means is that if your e-mail address changes, or if you have more than one e-mail and send a swap-net message from a mail box that is not listed, your message will bounce. I try to scan the bounced messages and if one is from someone I think is on the list, I notify her/him and we correct whatever problem has occurred. However, sometimes I miss a message from a legitimate member. This is a reminder—if you change your e-mail address, please remember to let me know (Kimball@sfu.ca). If you want to be able to send swap-net messages from more than one e-mail address, I'm happy to list both addresses, if you let me know.

Meredith Kimball
Manager, Swap-net list

MEMBERS' RECENT PUBLICATIONS

Lemieux, S. R., & Byers, E. S. (2008). The sexual well-being of women who have experienced child sexual abuse. *Psychology of Women Quarterly*, 32, 126-144.

We examined the association between child sexual abuse (CSA) and a range of positive and negative aspects of women's sexual well-being. We also investigated the extent to which women's cognitive-affective sexual appraisals mediated these relationships. Participants were 272 female community college and university students. Child sexual abuse involving fondling only was generally not associated with adverse sexual outcomes. However, the women who had experienced CSA involving sexual penetration or attempted sexual penetration were: a) more likely to be sexually revictimized in adulthood, b) more likely to have engaged in casual sex, unprotected sex, and voluntary sexual abstinence, and c) reported fewer sexual rewards, more sexual costs, and lower sexual self-esteem. These findings held over and above the effects of nonsexual abuse in childhood, and as predicted, sexual self-esteem partially or fully mediated most of these relationships. Nonsexual abuse in childhood and adult sexual victimization were also uniquely associated with a number of adverse sexual outcomes.

However, outcomes were not worse for women who had experienced CSA involving actual or attempted sexual penetration and sexual assault in adulthood. The results highlight the fact the CSA is a serious and widespread problem with significant implications for adult women's sexual functioning.

UPCOMING CONFERENCES/WORKSHOPS

QUIG-L: SEMINARS IN QUALITATIVE RESEARCH

Winter and Spring 2009 Upcoming Seminars

All Seminars at HSB, 155 College Street, from 12:00pm – 1:30pm

University of Toronto

Visit their website at <http://www.phs.utoronto.ca/qualmethod/>

January 14, 2009

“Ethical reflexivity in community-based research: Unpacking the implications of engaging community members as co-researchers”

This presentation will focus on ethical and practical considerations based on interviews and focus groups with Toronto Urban Health CBR projects that adopted a peer research approach and draw on findings from a content analysis of ethics review guidelines.

Speakers: Sarah Flicker, PhD, Adrian Guta, MSw, and Brenda Roche, PhD.

Date: **January 14th, 2009**, 12 - 1:30pm

Location: HS208, University of Toronto

Speaker Bios:

Dr. Flicker's background is in the area of community development, public health, HIV and adolescent development. She is engaged in an exciting and innovative program of research that focuses on teen HIV prevention and support. More broadly, she is interested in community-based participatory methodologies and is active on a variety of research teams that focus on adolescent sexual health with youth in Canada and (most recently) South Africa. Dr. Flicker works across methodologies (qualitative, quantitative and arts-based) and seeks to partner with youth, students and allied practitioners on action research agendas. Currently, she is an assistant professor in the Faculty of Environmental Studies at York University and an Ontario HIV Treatment Network Scholar. Recently, she has published in the areas of urban health, youth health, HIV, health promotion, ethics, the social determinants of health, and community-based participatory research. She is an active member of the Gendering Adolescent AIDS Prevention Research Group.

Adrian Guta holds a Masters of Social Work from the University of Toronto, specializing in Diversity and Social Justice. His research interests are in the areas of HIV, Sexual Diversity, Ethics, and Community-Based Participatory Methodologies. Adrian is currently pursuing doctoral studies at the Dalla Lana School of Public Health (University of Toronto), and is enrolled in the collaborative program in Bioethics (Joint Centre for Bioethics). His dissertation will explore ethical issues in HIV community-based research (CBR), towards improving CBR as a mechanism for community engagement.

Brenda Roche, PhD, is Director of Community-Based Research at the Wellesley Institute, an independent non-profit research and policy institute working to advance health equity through community-based research, community engagement, social innovation and policy development. She has recently returned to Toronto from the UK, where she was a Post-Doctoral Research Fellow in

Anthropology and Health at the Gender, Violence and Health Centre of London School of Hygiene and Tropical Medicine. She comes with academic and community based research experience exploring social and health issues in urban settings, including homelessness, sexual health, violence and psychological trauma and distress. Her doctorate, through the London School of Hygiene and Tropical Medicine, examined discourses on trauma that operate within the context of refugee resettlement, and how these influence health and social care practices for women (and their families) seeking political asylum in the United Kingdom.

February 26, 2009

“Hearts, bodies and identity: Towards a critical visual phenomenology of heart transplantation”

Speaker: Jennifer Poole, MSW, PhD

Date: **February 26, 2009**, 12 - 1:30pm

Location: HS208, University of Toronto

Speaker Bio:

Jennifer Poole is an Assistant Professor at Ryerson University's School of Social Work. A graduate of the Department of Public Health Science (now the Dalla Lana School of Public Health) at the

University of Toronto, her research program explores notions of recovery in health and mental health, taking up theoretical, practice and policy concerns. Current projects focus on the experiences of psychiatric survivors, older adults, Mad Students and heart transplant recipients. Her interests include mental health, health promotion, chronic illness, critical pedagogy, contemporary social theory and qualitative research. She hails from Montreal and is trying to give up caffeine.

March 27, 2009

”Meta-analysis and systematic reviews in qualitative research: Mission impossible?”

Speakers: Ellen MacEachen, PhD and Scott Reeves, PhD.

Date: [March 27, 2009](#), 12-1:30pm

Location: HS106, University of Toronto

Speaker Bios:

Ellen MacEachen is a social scientist with a Ph.D. from the University of Toronto Department of Public Health Sciences (now the Dalla Lana School of Public Health). She is an Assistant Professor in this department, where she teaches the course, Qualitative Research Practice. She is based at the Institute for Work & Health, where she is a Scientist. Ellen's research agenda is focused on developing qualitative methods within the field of occupational health, and examining how various systems are set up to help (or not help) workers who are injured at work. In the course of her work, Ellen has recently led two systematic reviews of qualitative literature.

Dr Scott Reeves is a Scientist at the Li Ka Shing Knowledge Institute at St. Michael's Hospital and the Wilson Centre for Research in Education. He is also Director of Research at the Centre for Faculty Development, St. Michael's Hospital and an Associate Professor in the Faculty of Medicine, University of Toronto. He is a sociologist who has been undertaking health professions education and health services research for nearly fifteen years. His main research interests are exploring and evaluating the processes and outcomes related to interprofessional education and practice by use of ethnographic, mixed methods and systematic review. He has published a variety of papers, reports, chapters and books on interprofessional education/practice. He is currently working on a new book on interprofessional teamwork and recently co-edited a series on qualitative research for the BMJ. He also works as an Associate Editor for the Journal of Interprofessional Care and is the Evaluation Director for the Canadian Interprofessional Health Collaborative.

May, TBA (check website for date)

“Using research-based drama for knowledge translation in health care”

Speakers: Pia Kontos, PhD and Katherine Boydell, PhD

Date: [May 2009](#) (Date and time TBD)

Location: TBD

Speaker Bios:

Dr. Pia Kontos is a Research Scientist at Toronto Rehabilitation Institute and Assistant Professor in the Dalla Lana School of Public Health at the University of Toronto. She obtained her Doctorate from the University of Toronto in the Department of Public Health Sciences, Social Science and Health Program. Her doctoral research was an ethnographic study of selfhood in Alzheimer's disease involving her

development of the concept of embodied selfhood that challenged the presumed loss of selfhood in Alzheimer's disease. During her post-doctoral fellowship she translated her ethnographic research on embodied selfhood into a dramatic production in order to explore with dementia care practitioners how this concept could improve person-centred dementia care. Central to her program of research is the development and use of research-based theatre and improvisational theatre as strategies for transforming the culture of care in long-term care, complex continuing care and rehabilitation settings thereby making it more humanistic and quality enhancing.

Dr. Katherine Boydell is a Sociologist and Scientist in Population Health Sciences at The Hospital for Sick Children. She is also appointed to the Department of Psychiatry and the Dalla Lana School of Public Health at the University of Toronto. Katherine received her Master of Health Science degree in Community Health and Epidemiology at the University of Toronto and her Doctorate in Sociology at York University. She conducts theoretically based, collaborative, mixed method research in the children's mental health system that is relevant and useful for individuals involved in health and social services at the community level - so that evidence will have an impact and will guide positive change. Her program of research in children's mental health systems and knowledge translation focuses on the pathways to mental health care for children and youth, accounting for children's perspectives, the impact of informal support on families of those with mental illness, knowledge translation and exchange in children's mental health, and qualitative methods.

**THIRD TRIENNIAL
ABORIGINAL POLICY RESEARCH CONFERENCE**

March 9-12, 2009

Sponsored by: The University of Western Ontario
The Department of Indian Affairs and Northern Development &
The National Association of Friendship Centres
London, Ontario

Registration is now open. For more information please see www.aprc-crmpa.ca. For registration, please see <https://register.aprc-crmpa.ca/>

**CFP: INTERDISCIPLINARY CONFERENCE
LUMPEN-CITY: DISCOURSES OF MARGINALITY/MARGINALIZING DISCOURSES**

March 12-13, 2009

Sponsored by: York University
Toronto, Ontario

Research on marginalized urban residents has been an academic cottage industry throughout the history of the social sciences – addressing social problems related to issues such as poverty, crime, youth, race, ethnicity, gender, health, and employment. To apprehend these notions of difference, conceptualizations of the poor, the underclass, the outcast, the ghetto, exclusion, marginality and others have been developed and applied. Inevitably, research defines and represents a group and as such influences everyday preconceptions and politico-administrative strategies, including policies, regulations and laws.

Contextualizing cultural and behavioural patterns of marginalized populations, academic and activist research commonly seeks to humanize an excluded group and/ or suggest alternative strategies of intervention and modes of engagement by which to remedy the inequities of a particular situation. However, by virtue of representation fixity is imposed upon the identified population. Marginalized and excluded groups are often rendered vulnerable and passive through the circumscribed dictates of

representational inscription. How can innovative and creative discourses break with this pattern of subjection?

This conference challenges academics and activist-scholars alike to reflect upon the realities and potentialities of research on marginalized urban populations in the context of their struggles. We invite scholarly contributions which illuminate issues of representation by exploring multiple axes of identity such as class, race, gender, ethnicity, age, ability/disability, and sexuality.

The York University Sociology Graduate Students' Association (YSGA) in conjunction with the City Institute at York University and the Collaborative Urban Research Laboratory (CURL) invite academics and activist-scholars to participate in the interdisciplinary debates of this conference on **Thursday**, March 12th and **Friday**, March 13th 2009 in Toronto, Canada.

For updates, please see www.lumpencity.com

**2009 SITUATED PRACTICES SEMINAR
“DOING POLITICS/ACTING POLITICALLY: AN INTERNATIONAL WORKSHOP
ON THE POLITICAL DIMENSIONS OF SITUATED PRACTICES”**

March 19-20, 2009

Sponsored by: University of Fribourg, Switzerland
Department of Social Sciences

Presentations will be given by Tim Berard (Kent State University), Baudouin Dupret (CNRS-ISP, Cachan), Jean-Noël Ferrié (CNRS-PACTE, Grenoble), Philippe González (Université de Lausanne), Ivan Leudar (University of Manchester), Christoph Maeder (Pädagogische Hochschule Thurgau), Jiri Nekvapil (Charles University, Prague), Louis Quéré (EHESS, Paris), Thomas Scheffer (Freie Universität Berlin), Yasmine Siblot (Université Paris I), and Cédric Terzi (Université de Lille 3).

This workshop was organized in collaboration with the Swiss Sociological Association's research committee Interpretative Sociology and is supported by both the Swiss National Science Foundation and the Swiss Sociological Association.

Workshop information can be found at:

<http://www.unifr.ch/sociomedia/2007/index.php?page=sps>

There is both advanced registration and onsite registration available.

Organizing Committee: Alain Bovet, Esther Gonzalez Martinez and Philippe Sormani

**2009 FAMILY SUPPORT CONFERENCE
UNLOCKING RESOURCES : PARENT LEADERSHIP IS THE KEY**

May 19, 2009

Westin Convention Center Pittsburgh Hotel

Sponsored by : University of Pittsburgh
Pittsburgh, PA

The Annual Family Support Conference began in 1994 to gather parents, family support staff, policy makers, human service professionals, community leaders and other individuals committed to children and families to discuss issues and trends, hear new ideas in the field, and network!

THE SCOPE OF FAMILY SUPPORT...

Strengthening Families with Services and Support
Child Development, Health and School Readiness
Outreach to Families—especially those who would not otherwise participate
Parent Leadership and Advocacy
Economic Self-Sufficiency

The Family Support movement consists of over 30 centers in Allegheny County primarily funded by the Allegheny County Department of Human Services. All centers are unique because they are designed by parents and community members to address their specific needs. However, they each follow the same 7 principles: parent governance; relationship and strengths-based; services designed by and for participants; reflects, respects and enhances cultures of community; program evaluation; and serve the entire family without eligibility requirements.

Registration Information

- Early Bird Registration Deadline: Monday, April 6, 2009 - \$85
- Standard Registration Deadline: Friday, May 1, 2009 - \$95
- Any registrations for which payment has not yet been received by Friday, May 1, 2009 will only be accepted if space is available and at a cost of \$110

<http://www.education.pitt.edu/news/newsdetails.aspx?id=335>

INTERNATIONAL CONFERENCE ON DIALOGIC LANGUAGE USE 2: CONSTRUCTING IDENTITY IN INTERPERSONAL COMMUNICATION

August 19-21, 2009

Sponsored by: Modern Language Society of Helsinki
Helsinki, Finland

Identity is a broad, complex and increasingly topical issue in a variety of fields such as sociolinguistics, pragmatics, discourse analysis, linguistic anthropology and language learning and teaching, where identity is primarily regarded as a social phenomenon. The conference on Dialogic Language Use 2 aims at understanding the complexity of identity by bringing together scholars from diverse theoretical and methodological backgrounds and creating theoretical and methodological interfaces between macro- and microanalytic approaches, quantitative and qualitative methods, spoken and written language, and the synchronic and diachronic perspectives. The conference focuses on English, German and Romance languages.

See the conference website for more information:

http://www.helsinki.fi/dialog2/index_en.html

CALL FOR PAPERS/ABSTRACTS

CALL FOR ABSTRACTS LINGUISTIC IMPOLITENESS AND RUDENESS II (LIAR II) THE 2009 INTERNATIONAL CONFERENCE OF THE LINGUISTIC POLITENESS RESEARCH GROUP

June 30 – July 2, 2009

Sponsored by: Lancaster University
Lancaster, United Kingdom

Deadline: January 31, 2009

This three-day conference focuses on language and communication that might be described as 'impolite', 'rude', 'aggressive', 'face-attacking', etc., building on the success of the first impoliteness conference (LIAR) at the University of Huddersfield. However, we also welcome any papers that are related to politeness theory, application or practice in any form. Researchers and postgraduates working in fields such as linguistics, sociology, psychology, communication studies, business studies, organizational studies, conflict resolution studies, literature and philosophy are particularly welcomed, though the conference is open to all interested parties.

Opening plenary: Geoffrey Leech (University of Lancaster)

Plenary speakers:

Sara Mills (Sheffield Hallam University)

Marina Terkourafi (University of Illinois at Urbana-Champaign)

Karen Tracy (University of Colorado)

Please contact the organizers regarding any proposals for panels
Papers and Posters abstracts deadline: **31 January 2009**.

Organizers: Jonathan Culpeper (Lancaster University) and
Derek Bousfield (University of Central Lancashire)

Email: impoliteness2009@lancaster.ac.uk

CALL FOR PAPERS THE 15TH ANNUAL CONFERENCE ON LANGUAGE, INTERACTION, AND SOCIAL ORGANIZATION

May 14 – 16, 2009

Presented by: The Language, Interaction, and Social Organization (LISO),
Graduate Student Organization at UCSB, The Center for Language, Interaction
and Culture (CLIC), & The Graduate Student Association at UCLA.

University of California, Santa Barbara, CA

Deadline: January 31, 2009

The conference addresses topics at the intersection of language, interaction, and culture from theoretical perspectives that employ data from recorded, spontaneous interaction. This includes, but is not limited to, conversation analysis, discourse analysis, ethnography of communication, ethnomethodology, and interactional sociolinguistics. We welcome abstracts from graduate students and faculty working in the areas of Anthropology, Applied Linguistics, Education, Linguistics, Psychology, and Sociology.

Presenters will have either**:

- (a) 20 minutes for presentation and 10 minutes for discussion
- (b) 25 minutes for a data session (small group presentation/discussion of research and data).

** to be determined by the abstract review committee

SUBMISSION GUIDELINES

Abstracts must be submitted via the online abstract submissions system

{LINK: <http://linguistlist.org/confcustom/lisoconference>}

Abstracts must be submitted in .doc, .pdf, .txt, or .odt format. Abstracts must be no more than 500 words long and should not include the author's name or any other identifying information. The abstract should include the following:

- (1) a clear statement of the main point or argument of the paper;
- (2) a brief discussion of the problem or research question with reference to previous research and the work's relevance to the area of study;
- (3) a short piece of data to support the main point or argument;
- (4) conclusions and/or implications of the research, however tentative.

In the case of an abstract longer than 500 words, only the first 500 words will be read. Papers will be selected based on evaluation of the anonymous abstract.

Deadline for electronic submission and receipt of abstracts is ***January 31, 2009***. Late submissions will not be accepted. Notification of acceptance or non-acceptance will be sent via email by March 31, 2009.

For additional information, please visit: <http://www.ucsbliisoconference.org/>

Questions can be sent to: LISOconference@gmail.com

* Additionally, immediately following the conference will be the 3rd Biennial LISO Symposium: The Social-Interactional Lives of Very Young Children University of California, Santa Barbara May 17, 2009

Tentative Presenters:

Marjorie Harness Goodwin

Amy Kyratzis

Gene Lerner

* For additional information, please visit: <http://www.liso.ucsb.edu/symposia/LISOSymp2009.html>

Or, contact:

Gene Lerner: Lerner@Soc.ucsb.edu

Amy Kyratzis: Kyratzis@Education.ucsb.edu

CALL FOR PAPERS
INTERNATIONAL SYMPOSIUM ON FACE AND POLITENESS

July 20, 2009

Sponsored by: Griffith University
Brisbane, Australia

Deadline: February 1, 2009

It is our pleasure to announce an International Symposium on Face and Politeness to be held in Brisbane, Australia on **10 July 2009**. This one-day symposium, endorsed by the Linguistic Politeness

Research Group, focuses on the relationship between face and im/politeness, although any papers relating to theorizing or analysing im/politeness and face more generally are welcome. Researchers and postgraduates working in linguistics, pragmatics, conversation analysis, and communication studies, as well as education, business and organizational studies, sociology, psychology and any other fields with an interest in face and/or politeness are cordially invited to Brisbane, Australia. As we mentioned before we are particularly interested in approaches to face and/or politeness from the perspective of ethnomethodology/conversation analysis.

The plenary speaker is Professor Sukriye Ruhi (Middle East Technical University, Ankara).

The symposium also features an invited panel on Chinese face and impoliteness co-organised by Yuling Pan (U.S. Census Bureau) and Dániel Z. Kádár (Hungarian Academy of Sciences).

Call for papers

Abstracts for the International Symposium on Face and Politeness should be approximately 400 words (excluding any references) and submitted as Word or pdf files to FacePoliteness2009@gmail.com by **1st February 2009**. Abstracts should include a specific focus on politeness, impoliteness or face, and also indicate the methodology and data used. All submissions will be responded to by the end of **February**. See the conference website for further information:

<http://sites.google.com/site/facepolitenesssymposium2009/Home>

CALL FOR ABSTRACTS
5TH ANNUAL INTERNATIONAL MIXED METHODS CONFERENCE AND WORKSHOPS 2009

July 8 – 11, 2009

Sponsored by: The School of Healthcare
University of Leeds

Harrogate, North Yorkshire, UK

Deadline: April 3, 2009

Abstracts are invited from researchers utilising mixed and multi methods in creative ways, particularly those working within the social sciences, health and education in the following themes:

Philosophical and methodological issues
Real world applications
Mixing art and science

Quality and Ethics
Mixing Science and Social Science

On-line booking and abstract submission will be available via the website (<http://www.mixedmethods.leeds.ac.uk>) from 1st December 2008. The deadline for abstracts will be **April 3rd 2009**. To submit an abstract please read the guidelines and use the online form at: <http://www.mixedmethods.leeds.ac.uk/pages/abstractsub/abstractform.aspx>

Keynote speakers include:
Professor Jennifer Mason, University of Manchester, UK
Dr Leslie Curry, Yale University, USA
Dr Alicia O'Cathain, University of Sheffield, UK

Workshops will be facilitated by:
Professor John Creswell and Dr Vicki Plano-Clark
Professor Tony Onwuegbuzie and Dr Kathy Collins
Professor Donna Mertens
Professor Alan Bryman
Professor David Morgan

CALL FOR PAPERS
ASIAN JOURNAL OF SOCIAL PSYCHOLOGY
SPECIAL ISSUE: CULTURE AND BRAIN:
OPPORTUNITIES FOR AND CHALLENGES TO ASIAN SOCIAL PSYCHOLOGY
Deadline: April 30, 2009

“Social neuroscience” has quickly become an active research area since Cacioppo’s (2002) seminal paper advocating the cross-fertilization between social sciences and neuroscience. Social psychologists have much to gain from social neuroscience and should at least become informed of its development (Berntson & Cacioppo, 2004). In fact, within social neuroscience, a sub-area is emerging that centers on *cultural* studies with a noticeable bicultural or multicultural element involving *Asia*.

The present Special Issue is intended to promote better understanding of the relationships between culture and the brain. It looks for papers that can stimulate debate on how the joint study of culture and the brain *may* offer opportunities for and challenges to Asian social psychology. Cross-cultural and bicultural empirical studies with an Asian element are welcome, as are critical and visionary literature reviews.

Submission of papers

Papers should be submitted online and prepared according to “Author Guidelines” available from the “Instructions and Forms” menu of the journal website: <http://mc.manuscriptcentral.com/AJSP>. After you have entered the “Corresponding Author Center”, click “Click here to submit a new manuscript”, and follow the menu. When you reach Manuscript Type, choose “Special Issue”. In your Cover Letter, you should state the title of the Special Issue.

Closing date of submissions: 30 April, 2009

Editors

Sik Hung Ng
Department of Applied Social Studies
City University of Hong Kong
Hong Kong SAR, China
Email: sikhung.ng@cityu.edu.hk

Shihui Han
Department of Psychology and Functional Imaging Center of the Academy for Advanced
Interdisciplinary Studies
Peking University
Beijing, China
Email: shan@pku.edu.cn

CALL FOR PAPERS
A SPECIAL ISSUE OF SOCIOLOGICAL RESEARCH ONLINE
BIG STRUCTURES, LARGE PROCESSES, HUGE COMPARISONS –
NARRATIVE FROM MINOR TO MAJOR

Edited by: Liz Stanley, University of Edinburgh

Deadline: May 1, 2009

A special issue of the journal Sociological Research Online will be published in **September** 2009, on the theme of using narrative to explore 'Big structures, large processes, huge comparisons'. The issue is in memory of historical sociologist Charles Tilly, author of the well-known book of this title, who died in April 2008.

Tilly's *Big Structures, Large Processes, Huge Comparisons* among other things asks some uncomfortable but crucially interesting questions for narrative inquiry and its tendency to focus on the small-scale and local at the expense of major issues and topics and it strongly encourages exploring and analysing narrative on a larger scale and concerning the collective. 'The trouble with stories', Tilly proposed in his book chapter of this title, is that many sociologists who analyse them tend to presuppose overly individualistic understandings of cause and effect in social life, and also to think small and in a limited compass about individuals talking about specific matters, rather than the big stories and collective processes that produce social change. As part of this, he insists that good sociological analysis must avoid the 'pernicious postulates' and address the core questions concerning the nature of social life which he identifies: what fundamental large-scale processes need to be identified and explored in order to understand how the world has changed and is still changing? How do those processes relate to each other? And which social structures are impacted upon and how by those processes?

For Tilly, the behaviour and talk of individuals, collective organisation and action, and social processes at a large-scale, are interlinked, for instance, in the formation of nation states, the rise of collective movements for social change, fundamental shifts in the way that 'the person' and notions of identity are conceived, equally far-reaching re-conceptualizations of the nature of knowledge and who is seen to legitimately possess it, and so on. His approach, then, is neither anti-narrative nor opposed to the small-scale and the specific indeed, one of his calls is for the individualization of comparisons and generalisations. Rather, for Tilly, what is required is an approach that builds concrete and historical

analyses which are concerned with real times, places and people; which recognise that time matters and that when things happen affects how they happen; which avoid 'pernicious postulates'; which connect 'real people' and their conduct and talk with the collective and the large-scale; and which embrace generalisations and comparisons which link persons and social processes.

Contributions for the special issue of Sociological Research Online are called for which avoid re-describing Tilly's ideas in *Big Structures, Large Processes, Huge Comparisons* or any others of his publications, and which instead use his ideas and broad approach. Offers of papers are welcome on any aspect of narrative inquiry which uses narrative to explore "big structures, large processes and huge comparisons" in any and all of their incarnations, from exploring governmentality from the underside, to investigating how social change is perceived and experienced, from comparing countries X and Y, to providing a new narrative take on the nature of knowledge --- in other words, which are concerned with any themes and issues which Tilly raises or which have light thrown on them through the observations he makes.

Papers should be around 8000 words in length, and contributions which make use of the opportunities provided by electronic publication, such as providing sections of data, visual materials and so on, will be particularly welcome (nb. these will not be included in word count). All contributions will be peer refereed.

In addition, shorter contributions from postgraduate students and postdoctoral researchers only are greatly welcomed. These should be up to 4000 words in length, deal with the same kinds of 'big' issues, and will also be peer reviewed.

Because Sociological Research Online is an electronic journal and does not work within paper, postage and other limitations, following the review process all accepted articles can be published in the [September](#) 2009 issue of the journal.

The guest editor for this special section of Sociological Research Online is Liz Stanley, whose *Mourning Becomes... Post/Memory, Commemoration & the Concentration Camps of the South Africa War* (Manchester University Press, 2006; Wits University Press, 2008) is centrally concerned with the relationship between temporality, narratives of commemoration, and nationalism.

The closing date for the receipt of contributions is **1 May 2009** and should be made through the usual procedures for submitting work to Sociological Research Online, which intending contributors will find on its website, at www.sociologicalresearchonline.org.uk

To discuss ideas and possibilities, please email liz.stanley@ed.ac.uk

Liz Stanley

Director of the Centre for Narrative and Auto/Biographical Studies (NABS) and Professor of Sociology, University of Edinburgh, UK

Section on Women and Psychology (SWAP) STUDENT AWARDS

1. SWAP STUDENT PAPER AWARD

In keeping with its goals of advancing the place of women in psychology and of promoting research of special relevance to women, the Section on Women and Psychology (SWAP) will offer a \$500.00 student paper award this year. **To be eligible the paper must have been submitted to the 2009 Annual Convention of the Canadian Psychological Association.**

SWAP's mandate is: 1) to promote research, practice and education about and by women in psychology; 2) to make feminist research and practice visible within CPA and psychological communities more generally; 3) to represent a collective of psychologists working to eliminate sexism, racism, classism, heterosexism and homophobia, ageism, and ableism. As such, the student paper award will be given to the paper that best represents any part of this mandate.

Submissions may be in French or English. Papers co-authored with a faculty member or non-faculty are acceptable, but the research must be primarily that of the applicant who must be first author. If a paper is co-authored by two students who wish to be considered together for the award (share the award if the paper wins), this must be clearly indicated on the submission and full information provided for both authors (see below).

Interested students should prepare a summary of their paper or poster (approximately three (3) pages in length), with all identifying data (author's name and university) omitted. If any of the authors are not students, this should be indicated. Selection will be made by masked review. Selection criteria will include the following:

1. Significant contribution to feminist psychology on any issue and/or a significant contribution to psychological knowledge about issues of particular concern to women and/or focus on activism or other applications of feminist theory/research.
2. Diversity issues acknowledged/dealt with appropriately.
3. Methodological excellence either qualitative or quantitative.
4. Clear and effective writing style.

Students submitting papers for the student paper award will automatically be considered for a SWAP Travel Bursary, and will receive one year free membership in SWAP. Please submit your paper summary, a SWAP Student Awards Application, and a copy of your CPA letter of acceptance and abstract to eb_brownlie@camh.net by **Friday, April 17, 2009**.

QUESTIONS? Contact E.B. Brownlie at: eb_brownlie@camh.net or (416) 535-8501 ext. 4062.

2. SWAP TRAVEL BURSARIES FOR STUDENTS

The Section for Women and Psychology (SWAP) of the Canadian Psychology Association is offering **\$200 travel bursaries** to students in psychology (and those individuals who have recently graduated) who are presenting at the 2009 Canadian Psychological Association (CPA) Annual Convention in Ottawa, Ontario or at the SWAP pre-conference institute. Priority for the travel bursaries will be given to those students whose papers on topics of special relevance to women or feminism have been accepted for these programmes and who need the money to help defray their expenses.

Interested students should complete a SWAP Student Awards Application and a copy of your CPA letter of acceptance and abstract to eb_brownlie@camh.net no later than **Friday, April 17, 2009**.

QUESTIONS? Contact E.B. Brownlie at eb_brownlie@camh.net or (416) 535-8501 ext. 4062.

SWAP STUDENT AWARDS APPLICATION FORM

Applying for: Student Paper Award? _____ Travel Bursary? _____

Name: _____

Mailing Address: _____

(in May 2009) _____

E-mail address: _____

Telephone: (H) _____ (W) _____

University: _____

Current Program (or program completed for recent graduates):

_____ B.A. or B.Sc. _____ M.A. or M.Sc. _____ Ph.D.

Presentation format: ___paper ___poster Are you the senior author? ___yes ___no

Please attach a copy of your abstract(s) and the letter of acceptance from CPA.

Are you a SWAP student member? _____yes ___no

Estimated Travel Costs (please itemize): _____

All entries must include the following declaration.

I declare that I was registered as a student in the fall of 2008 at _____.

University

OR

I declare that I graduated from the psychology program of _____ in the 2007-8 academic year.

University

Signature

LES PRIX ET BOURSES POUR ÉTUDIANTS
Section femmes et psychologie, Société canadienne de Psychologie

1. Prix pour le meilleur article étudiant de la section femmes et psychologie

En accord avec ses objectifs reliés à l'avancement des femmes en psychologie, à la promotion de la recherche d'intérêt spécifique aux femmes, la section femmes et psychologie offrira un prix d'une valeur de \$500 pour le meilleur article écrit par un(e) étudiant(e). Pour être admissible au concours, une proposition de présentation pour le 69^e Congrès annuel de la Société canadienne de Psychologie (SCP) (2009). Le prix du meilleur article étudiant sera réservé à la communication livrée au colloque annuel 2009 de la Société canadienne de la psychologie qui a le mieux contribué à **l'avancement de la connaissance psychologique sur un sujet qui a une importance particulière pour les femmes.**

Les soumissions peuvent être en anglais ou en français. Les articles écrits en collaboration avec un professeur ou un autre chercheur sont admissibles en autant que l'étudiant(e) qui soumet sa candidature pour le prix soit le premier auteur de l'article, et que cette recherche provienne principalement de l'étudiant(e) en question. Si l'article a été écrit par deux étudiant(e)s qui veulent être considéré(e)s ensemble pour le prix (et partager le prix si l'article est gagnant), cela doit être clairement indiqué lors de la soumission, en indiquant les coordonnées des deux auteurs.

Les étudiant(e)s intéressé(e)s doivent soumettre **un résumé** (d'une longueur de trois pages) de leur article ou affiche, en s'assurant que toutes les coordonnées de l'auteur(e) (nom et université) ne paraissent. Si certains auteur(e)s ne sont pas étudiant(e)s, ceci doit être clairement indiqué. Le processus de sélection se tiendra dans l'anonymat quant à l'auteur(e), et se fera par des paires. Les critères de sélection seront les suivants:

1. Excellence scientifique/contribution importante à l'avancement de la connaissance psychologique sur un sujet d'importance particulière pour les femmes et/ou une contribution qui porte sur l'activisme ou qui permet de faire avancer la théorie et la recherche féministe.
2. Une contribution qui démontre un respect pour la diversité.
3. Excellence méthodologique quantitative ou qualitative.
4. Clarté et efficacité du style de rédaction.

Les étudiant(e)s qui soumettent une proposition seront automatiquement considérés pour une bourse de voyage de la section femmes et psychologie. Si vous avez des questions, contactez Dr. E.B. Brownlie à l'adresse électronique suivante: **eb_brownlie@camh.net** ou par téléphone: (416) 535-8501 ext. 4062.

Faite parvenir votre soumission à **eb_brownlie@camh.net**. Les soumissions doivent être reçues par **le 17 avril, 2009**. Veuillez inclure le résumé (d'une longueur de trois pages) de leur article ou affiche, une copie de la lettre qui indique qu'elle a été acceptée par les responsables du colloque, une copie du résumé de votre communication et la formulaire de demande de Prix et Bourse de voyage pour les étudiants de la Section femmes et psychologie

2. Bourses de voyage pour les étudiants

La section femmes et psychologie de la Société canadienne de la psychologie offre une bourse de voyage aux étudiants en psychologie (ainsi qu'aux étudiants qui viennent de compléter leurs études en psychologie) qui présenter au 2009 colloque annuel de la Société canadienne de la psychologie. La priorité pour les bourses de voyage sera accordée aux étudiant(e)s dont la communication portera sur un sujet d'importance particulière aux femmes et qui ont besoin de soutien financier pour les aider à defrayer les dépenses reliées à leur participation. Si vous avez des questions, contactez Dr. E.B. Brownlie à l'adresse électronique suivante: **eb_brownlie@camh.net** ou par téléphone: (416) 535-8501 ext. 4062.

Les étudiant(e)s intéressé(e)s doivent remplir le formulaire ci-joint en anglais ou en français. Veuillez inclure une copie de la lettre qui indique qu'elle a été acceptée par les responsables du colloque, le résumé soumis à SCP, et la formulaire de demande de prix et bourse de voyage pour les étudiants de la section femmes et psychologie. Les soumissions doivent être reçues au plus tard **le 17 avril, 2009**. Veuillez faire parvenir la documentation requise à **eb_brownlie@camh.net**

**Formulaire de Demande de Prix et Bourses de voyage pour les étudiants
Section femmes et psychologie**

Nom: _____

Adresse postale: (en mai 2009) _____

Courriel: _____

Telephone: (m) _____ (b) _____

Université : _____

Candidate: _____ B.A. ou B.Sc. _____ M.A. _____ PhD

Type de présentation : ___ article? ___ affiche? Etes-vous le premier auteur? ___ oui ___ non

Veillez inclure une copie du résumé de votre communication et de la lettre qui indique qu'elle a été acceptée par les responsables du colloque.

Etes-vous un membre étudiant de la Section femmes et psychologie? ___ oui ___ non

Coûts associés à votre voyage: _____

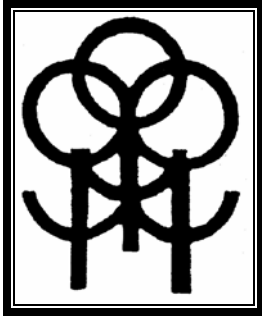
Veillez signer l'attestation suivante:

J'atteste qu'à l'automne 2008, j'étais étudiant(e) à l'université _____.

ou

J'atteste avoir obtenu mon diplôme du département de psychologie de l'université _____
au cours de l'année académique 2007 - 2008.

Signature



SWAP ASSOCIATE MEMBERSHIP APPLICATION FORM

Name: _____

Mailing Address: _____

Email address: _____

Annual Dues:

Please check one:	Associate Member	\$21.40
	Sustaining Associate Member	\$32.10
	Student Associate Member	\$5.35

Associate Members of SWAP receive our newsletter three times a year, and enjoy full rights and privileges of membership (except for the right to nominate or hold office). The membership year extends from January 1 to December 31.

According to section bylaws, Associate Membership is open to those persons who are not members of CPA, but who are involved in work or study relevant to the purposes of the Section on Women and Psychology. Please describe briefly how your interests relate to women and psychology:

Signature: _____ **Date:** _____

Please mail this form and cheque (made payable to CPA/SWAP) to Dr. Noreen Stuckless, Department of Psychology, Rm.209, BSB, York University, 4700 Keele St. Toronto ON M3J 1P3 Tel:(416) 736-5115 Ext 66231; Fax: (416) 736-5814; E-mail: stuckles@yorku.ca