



NEWSLETTER OF THE CPA/SCP

Vol. 40 No. 1
Sept. 2013

SECTION ON WOMEN & PSYCHOLOGY
SECTION: FEMMES ET PSYCHOLOGIE

www.cpa.ca/swap

WHAT'S INSIDE

REGULAR FEATURES

2012 - 2013 Executive.....	2
2012 - 2013 Provincial Reps	4
Coordinator's Message	5
Editor's Message	7

SPECIAL FEATURES

SWAP Annual General Meeting Minutes	8
Executive Reports from AGM.....	11
Treasurer's Report	11
SWAP Financial Statement	12
APA Division 35 (SPW) Report.....	13
Nominations Report.....	14
Status of Women Committee (SWC) Report	15
Student Committee Report	16
SWAP Archives Update	17
SWAP Awards at AGM.....	18
Distinguished Member Award	18
Award for Contributions to the Field of Women and Feminist Psychology	19
Feminist Mentoring Award	20
SWAP Student Bursary & Travel Bursary Awards.....	21
SWAP Winning Student Paper.....	22

STAYING CONNECTED

Call for Abstracts.....	24
Call for Proposals	25
Newsletter Submissions.....	26
SWAP Application Form.....	27

2012 - 2013 EXECUTIVE

Coordinator



Lynda Ross
Athabasca University
lyndar@athabascau.ca

Coordinator-Elect



Paula Barata
University of Guelph
P: 519-824-4120
pbarata@uoguelph.ca

Treasurer / Secretary



Noreen Stuckless
York University
P: 416-736-2100, Ext. 66231
stuckles@yorku.ca

Chair, Status of Women Committee



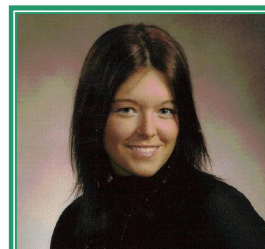
Lucie Kocum
Saint Mary's University
Lucie.Kocum@smu.ca

Membership Coordinator



Lana Stermac
OISE University of Toronto
P: 416-978-0722
l.stermac@utoronto.ca

Web Maven/Newsletter Editor



Jessica McCutcheon
University of Saskatchewan
jessica.mccutcheon@usask.ca

Abstract Review Coordinator



Paula Barata
University of Guelph
P: 519-824-4120
pbarata@uoguelph.ca

Canfam List Moderator & SWAP Award Coordinator



E.B. Brownlie
University of Toronto
P: 416-535-8501, X 4062
ebbrownlie@camh.net

2012 – 2013 EXECUTIVE

CPA Board Liaison



Aimeé Surprenant
Memorial University
asurpren@mun.ca

Nominations Coordinator



Colleen MacQuarrie
University of PEI
P: 902-566-0617
cmacquarrie@upei.ca

Division 35 (SPW) Liaison



Charlene Senn
University of Windsor
P: 519-253-4232 ext. 2255
csenn@uwindsor.ca

Swap Archivist / Founding Coordinator



Sandra Pyke
York University
spyke@yorku.ca

Student Representative



Taslim Alani
Lakehead University
talani@lakeheadu.ca

2012 – 2013 PROVINCIAL REPS

Alberta



Lynn Sloane
Sloane Psychological Services
P: 403-262-5340
sloanelm@shaw.ca

Nova Scotia



Lucie Kocum
Saint Mary's University
Lucie.Kocum@smu.ca

BRITISH COLUMBIA

Position vacant

MANITOBA

Position vacant

NEWFOUNDLAND

Position vacant

QUEBEC

Position Vacant

YUKON, NWT, NUNAVUT

Position vacant

Ontario



Brenda Bettridge
Psychological Services
Ottawa Carleton Dist. School
Board
P: 613-596 8211, X, 8466
dakota@hawk.igs.net

Prince Edward Island



Colleen MacQuarrie
University of PEI
P: 902-566-0617
cmacquarrie@upei.ca

Saskatchewan



Linda McMullen
University of Saskatchewan
P: 306-966-6688
linda.mcmullen@usask.ca

New Brunswick



Carmen Poulin
University of New Brunswick
P: 506-458-7800
Carmen@unb.ca

Coordinator's Message



Dear SWAP Member,

Writing this brief message for our SWAP membership has once again given me the opportunity to reflect on how SWAP provides a space for feminist psychologists to prosper. Our presence at this summer's CPA Convention was another reminder of the wonderful women who participate in and contribute to SWAP's important and vital role in the field of psychology. Our numbers continue to grow and we encourage all of you to maintain your active membership with SWAP! Your participation is valued!!

The 74th Annual CPA Convention was held in Québec City, June 13 – 15, 2013 at the Québec City Convention Centre. According to the CPA website, "This year's convention welcomed over 1,500 convention delegates!" This was a lovely place to be at the beginning of summer. The stimulating sessions, meetings, and social events were coupled with the warmth of the early summer and the pleasures of exploring one of Canada's most beautiful and historic cities.

The CPA 2013 Conference – In Retrospect

SWAP's programme of events at this year's conference was full. It began with the SWAP Pre-Convention Institute – *My Episte-What?: A Practical Guide To Navigating Feminist Research Methods And Analyses With Epistemology At The Center*. The Institute focused on practical tools for working through links among feminist epistemologies, methodologies and analytic techniques. Special attention was paid to discourse analysis informed by feminist post-structuralist epistemology. Warm appreciation goes out to all of the presenters, and a special thank you to Dr. Maria Gurevich as lead organizer of, and presenter for, this informative and well-attended event. Not only did we all learn a lot from the presentations, from generous sharing of resources following the workshop, but the outcomes were not just knowledge based. Of equal, or perhaps of more, importance the workshop inspired an excitement for each of us in imagining new ways to frame research questions, to approach our research, and to explore "data"!

Our 2013 CPA/Section Invited Keynote Speaker and recipient of the 2012 Distinguished Member Award was **Dr. Linda McMullen**. Dr. McMullen received her Clinical Psychology PhD from the University of Saskatchewan in 1981 and has been active in her community and the academy promoting more authentic therapeutic and research approaches to understanding women's health. Throughout her career she has illustrated the value of maintaining a strong critical feminist presence while advancing scholarship, particularly into women's depression, and in mentoring feminist students at various stages of their careers. She has clearly contributed to the growing advancement of feminist psychology and will continue to inspire others to be bold, brave, and uncompromising when it comes to articulating difference and strength where others see illness. Her career challenges the status quo with regard to women's health and inspires us to do likewise.

Dr. McMullen's stimulating keynote presentation (along with its formidable "Prezi" visuals!) – *Antidepressants as Placebo and Panacea: Implications for Women's Health* – addressed issues of the steadily rising rates of antidepressant prescribing associated with mounting concern about the quality of evidence upon which such prescribing is based and the diverse ways in which such evidence is interpreted and acted upon. In her presentation, Dr. McMullen reviewed the history of antidepressants, the evidence for current challenges to the use and effectiveness of antidepressants, and the paradoxes in women's accounts of deciding to take or to

discontinue antidepressants. She also outlined and assessed how the changing status of antidepressants might have an impact on women's health. Dr. McMullen's inspired presentation encouraged much reflective thought and discussion of this important topic!

Other highlights of SWAP's Annual Business meeting included the **2013 SWAP Distinguished Member Award** that was awarded to **Dr. Noreen Stuckless**, the **2013 Award for Contributions to the Field of Women and Feminist Psychology** was presented to **Dr. Carmen Poulin**, and the announcement, by Taslim Alani, of the **2013 Feminist Mentoring Award** to **Dr. Janelle Kwee**. Comments from students' nomination letters extolled her support, scholarship, and dedication to feminist principles. And **Sara Crann** was presented with the **2013 Student Paper Award** (\$500) and **Sachiko Nagasawa** was awarded the **Runner-up prize** (\$300). Both awards were presented by Dr. Lynda Ross, on behalf of Dr. E.B. Brownlie who was unable to attend the meeting. There were also seven students awarded **Travel Bursaries** in the amount of \$250 each – **Brianna O'Neil, Emilie Polak, Jessica McCutcheon, Taslim Alani, Courtney Williston, Hillary McBride and Kerry Erickson**. Congratulations again to all of the recipients!

At our annual business meeting, the "new" executive group was named and voted in unanimously. A thank you goes out to all of the past members for their tireless work and to all of those members who consented to remain in their past positions! Changes to the executive include Dr. Paula Barata coming in as chair-elect; Taslim Alani taking over as the Graduate Student Representative; and Jessica McCutcheon as incoming Newsletter editor (while retaining her position as Web Maven). Another special thanks to Dr. Carmen Poulin (Chair and Past-Chair) for her commitment to the SWAP executive (which will continue as she takes on the role of Provincial Representative for New Brunswick!); and to Jennifer Moore for her past role as Newsletter editor.

Following the SWAP Keynote presentation and Annual Business Meeting, our social event began with a light lunch (light, with exception of the overwhelming volume of olives that miraculously appeared to accompany the meal!) and lively conversation. In addition to the many informal discussions amongst attendees, the graduate students organized and executed a "speed-mentoring" activity for faculty and students to share interests and experiences as feminist psychologists. This was a great success and an activity that we hope will be repeated at our next social event in 2014!

Overall, all of the SWAP activities at the 2013 CPA Convention – including our pre-convention institute, social meetings, presentations from honoured guests, symposia, and posters presented by SWAP members – made for a very congenial and exciting conference experience for all of us.

Looking Ahead to 2014

The 75th Annual Convention of the Canadian Psychological Association is going to be held in Vancouver, BC, June 5-7, 2014, at the Hyatt Regency Hotel. Mark the date! This will be another spectacular venue for our meetings. The SWAP executive has already begun working on possible keynote speakers for the upcoming conference, and we will hopefully be able to share more information with you in our next Newsletter. The Call for Papers will be out soon. So, if you are planning on giving a paper, poster, or symposia, now is the time to start thinking about your submission. You will find more information about the conference and guidelines for submission online at <http://www.cpa.ca/convention/>

The start of each new academic year is always a busy and exciting time of the year bringing with it a sense of new beginnings and the promise of a happy and productive fall. Enjoy!

Best wishes

Lynda Ross, PhD
SWAP Coordinator

EDITOR'S MESSAGE

Welcome to a new issue of the SWAP Newsletter!



This is my first issue as Editor of the SWAP Newsletter so before I outline what is included I wanted to take a moment to thank everyone for submitting their reports to me in such a timely manner! I appreciate your making my job a little easier, especially since it is all still so new to me. Also, a huge thank you to the past Editor, Jennifer Moore, for all her hard work and for showing me the ropes.

Not too much has changed in terms of the executive slate for the 2013-2014 year. As mentioned, I have taken over the role as Newsletter Editor, Taslim Alani is the new Student Representative, and Carmen Poulin has agreed to fill the New Brunswick Provincial Representative positions. We're still looking for Representatives for British Columbia, Manitoba, Newfoundland, Quebec, and the Territories. The information for the executive and the provincial representatives can be found on pages 2-4.

The bulk of the newsletter consists of executive reports from the June CPA convention in Quebec City. The Coordinator's Message (pp. 5-6) provides a look back at the events. You will find the Minutes of the AGM (pp. 8-10), the Treasurer's Report (p. 11) the SWAP Financial Statement (p. 12), APA Division 35 Report (p. 13), Nominations Report (p. 14), Status of Women Committee Report (p. 15), and the Students Committee Report (p. 16). Additionally, you will find, on page 17, a reproduction of the PSYNOPSIS article describing the move of SWAP's Archives to the University of Ottawa.

In addition to the executive reports, you will see a section outlining the awards presented at the Annual Business Meeting, including the Distinguished Member Award (p. 18), the Award for Contributions to the Field of Women and Feminist Psychology (p. 19), the Feminist Mentoring Award (p. 20) and the Student Awards (p. 21), including the winning student paper (pp. 22-23).

Near the end of the newsletter you'll find some information on an upcoming conference (p. 24) and a call for proposals for a research grant (p. 25). I would love to see the *Staying Connected* section of the newsletter grow in the future and I welcome any submissions for the following columns: *Calls for Papers or Nominations*, *Feminist Review*, *Executive Showcase*, *Conference Reviews*, *Members' Recent Publications*, and *Recently Defended*. Also, please feel free to send me any other submissions that you would like included or ideas for future columns.

Note that the deadline for submissions for the January 2014 issue of the newsletter is Wednesday, January 15.

Sincerely,

Jessica McCutcheon, Newsletter Editor
Email: jessica.mccutcheon@usask.ca

SWAP AGM MINUTES

Minutes of the 2013
Annual Business Meeting
Canadian Psychological Association
Section on Women & Psychology
12:00-12:55, June 14, 2013
Quebec City, PQ

Chair: Lynda Ross
Past Chair: Carmen Poulin
Chair - Elect: Paula Barata

The meeting was called to order by the Chair, Lynda Ross at 12:05. There were 25 members in attendance.

1. The Agenda: Presented by Lynda Ross. Moved by Carmen Poulin and seconded by Lucie Kocum that the agenda be approved. The motion passed unanimously.

2. Minutes of the 2012 Annual General Meeting were distributed and read by the attendees. A motion to accept the Minutes was made by Lucie Kocum and seconded by Paula Barata. The motion passed unanimously.

3. Awards

Presentation of the 2013 Distinguished Member Award. Carmen Poulin, the Past-Chair, announced on behalf of the Nominating Co-ordinator, Colleen MacQuarrie and Sandra Pyke, that the recipient of the 2013 SWAP Distinguished Member Award was Dr. Noreen Stuckless. Carmen read part of the very long list of Noreen's accomplishments in her CV, highlighting her work in women's mental health research, violence against women, teaching of Psychology of Women and her contributions to SWAP over the years.

Presentation of the 2013 Award for Contributions to the Field of Women and Feminist Psychology. Lynda Ross presented this award to Dr. Carmen Poulin. Carmen's very many outstanding contributions to feminist psychology were listed. As well, Lynda Ross commented on Carmen's invaluable contributions as SWAP coordinator and especially her help as Past Coordinator.

2013 Feminist Mentoring Award Presentation. Taslim Alani, the Student Representative, announced that the recipient of the 2013 Feminist Mentoring Award was Dr. Janelle Kwee. Comments were read from students' nominations extolling Janelle for her support, scholarship and dedication to feminist principles. Dr. Kwee then thanked everyone for this honour, especially to Hillary and those who took the time to complete the nomination package and said how wonderful it is to work with the students.

Presentation of the 2013 Student Paper Awards and Student Travel Bursaries:

The Student Awards were presented by the Chair, Lynda Ross on behalf of the Student Award Coordinator, E.B. Brownlie. A description of the awards was also given. The 2013 Student Paper Award (\$500) recipient was Sara Crann. For the first time, a Runner-up award (\$300) was presented, to Sachiko Nagasawa. Seven Travel Bursaries were awarded. The recipients of \$250 Travel Bursaries were Brianna O'Neil, Emilie Polak, Jessica McCutcheon, Taslim Alani, Courtney Williston, Hillary McBride and Kerry Erickson. The students were all extended congratulations and were informed that they will receive a year's membership to the SWAP.

4. SWAP Executive Reports

4.1 Coordinator's report (the full text is reported in the Newsletter): Reported by Dr. Lynda Ross.

SWAP Institute: Thank you for those who put on the Institute, particularly to Maria Gurevich work.

Thanks: Thanks was given to the Executive members and other members for their support.

Events: Members were told to be sure to attend the Distinguished Member speech (Dr. Linda McMullen). They were

also reminded of the SWAP reception following and to participate in the “Speed Mentoring”.

4.2 Treasurer’s report. The 2012 Financial Report and Budget for 2013 was presented by Noreen Stuckless. The Report and Notes to the Budget can be found in the Newsletter.

This year SWAP’s financial situation was very good. For the past financial year (Jan. 1, 2012-Dec. 31, 2012) we had a balance of \$11,216.03. We had a net gain of \$1,814.53 (in large part because of a very successful Institute last June) and project a deficit of \$1,466 for the coming year. We awarded additional awards (a runner-up Paper Award and two additional Travel Awards). After expenses (\$2,180) and scholarships (\$2,550) are paid for the CPA conference this year we expect that we will have approximately a balance of \$11,262.33 (including a \$5,400 G.I.C. that will mature Feb., 2014). Any additional expenses (if applicable) will be reported in next year’s Financial Report. Acceptance of the Report was moved by Carmen Poulin and seconded by Lynda Ross. It was accepted unanimously.

4.3 Membership Co-ordinator:

The Membership report was given by Lana Stermac. There are 230 Current members, a slight increase over the membership of last year. SWAP has one of the largest memberships in the CPA.

4.4 Newsletter Report:

The Newsletter Report was given by the current editor, Jennifer Moore. Jennifer reported that other responsibilities caused her to decide to turn over the Newsletter editorship and thanked Jessica McCutcheon for taking on this role. Most of the members receive the Newsletter by email but there are still a few that prefer to receive paper copies which Charlene Senn mails out. Submissions are welcome for the Newsletter. Thanks was given to Jennifer for the excellent work she did on the Newsletter.

4.5 Student Awards and CanFem Psyc List Report. Lynda Ross gave this report on behalf of E.B. Brownlie. See above for the awards (2) and bursaries (7) that were given. These included three additional awards/bursaries that were given this year – a Runner-up Paper award (\$300) and two additional Travel Bursaries (\$250 each). We will continue to monitor the number of bursaries we can award. Work is continuing on the CanFem Psyc List. The full report is in the Newsletter.

4.6 Archive Committee Report. Lynda Ross read the report submitted by Sandra Pyke on behalf of the Committee. The committee members are Sandra Pyke, Shake Toukmanian, Alex Rutherford, Esther Greenglass, Carmen Poulin, Fran Cherry, Jenna MacKay and John Conway (CPA Archivist). Our material has been archived in the Canadian Women’s Archives in Ottawa. A picture with Fran Cherry, John Conway and Karen Cohen and brief comments were in PSYNOPSIS. This article is reproduced in the Newsletter.

4.7 Awards Committee Report. Lynda Ross reported on behalf of the Nominations Coordinator, Colleen MacQuarrie. There were a number of nominations this year and Colleen encouraged members to make nominations in the different categories. The full report is in the Newsletter.

4.8 Web update: The Webmaven, Jessica McCutcheon reported that there were problems with the sections accessing websites. They must go through the CPA Website Master. There were apologies from the CPA Board. Security is why there is no access.

4.9 Student Representative Report: Committee members: Jenna MacKay, Heather MacArthur and Taslim Alani. The members will get more student participation to have a more full report next year. They tried to get a list of feminist researchers and have a list that has been submitted to the CPA Webmaster. It is a working document, a work in progress. Members were invited to participate in the Speed Mentoring event that would take place at the Social Event following the meeting. See the full report in the Newsletter.

4.10. Status of Women Committee Report: Given by Lucie Kocum and Jessica McCutcheon The full report can be found in the Newsletter. Suggestion of a poster for information. There were recommendations for students and family conflict issues.

4:11 Abstract Review Coordinator Report. Paula Barata reported. There was a pretty stable number of abstracts submitted but fewer reviewers. Those who are willing to review next year should contact Paula. There were also two symposia. The CPA Board was establishing more specific criteria but it appeared we have no changes.

4:12 Division 35 Liason Report: Lynda Ross reported for Charlene Senn who could not be present but sent her report on associations with Division #35 (APA). She reminded the members that one can be a member of Division 35 and get the journal without being a member of APA. Charlene reported that she cannot go to the Division 35 meeting at the APA convention in Hawaii and requested that any member who is attending APA consider representing SWAP. It is very important to have SWAP make an appearance. Charlene's report can be found in the Newsletter.

5 Proposed Executive Slate for 2013-2014: The Proposed Executive Slate was presented.

Chair/Coordinator	Lynda Ross
Chair-elect/Coordinator elect	Paula Barata
Past Section /Coordinator	NA
Treasurer/Secretary:	Noreen Stuckless
Newsletter Editor:	Jessica McCutcheon
Chair, Status of Women Committee	Lucie Kocum
Graduate Student Rep:	Taslim Alani
Membership Coordinator	Lana Stermac
Web Maven	Jessica McCutcheon
Student Paper and Travel Co-ordinator:	E.B. Brownlie
Nominations Coordinator	Colleen McQuaire
Abstract Review Co-ordinator:	Paula Barata
SWAP-Division 35 Liaison	Charlene Senn
Listserv Coordinator	E.B. Brownlie

There were no further nominations from the floor. Lynda Ross moved and Carmen Poulin seconded that the Slate be accepted. The motion passed unanimously.

6. Provincial Representative Reports.

Lynn Sloane (AB)
Colleen MacQuarrie (PEI)
Brenda Bettridge (ON)
Linda McMullen (SK)
Lucie Kocum (NS)
Carmen Poulin (NB)
Vacant positions BC, MAN, NFLD, PQ

Carmen Poulin agreed to be the Provincial Representative for New Brunswick. She made a commitment to revive, revisit, and review the mandate of the Provincial Representatives.

7. Other Business.

- (1) Call for volunteers. Lynda Ross made a call for volunteers for vacant executive positions – Student representatives, Provincial representatives, and volunteers to coordinate/organize the Preconference Institute 2014 in Vancouver.
- (2) A question was raised about money for research. This will be discussed at the Executive meeting.

8. Adjournment. *We adjourned at 12:55.*

The SWAP Social Event followed the meeting (13:00 – 14:55)

TREASURER'S REPORT

Notes to the Financial Report for 2012 and the proposed 2013 Budget



This year's SWAP's financial situation was very good. Our Financial Statement shows our finances for January 1, 2012 to December 31, 2012 to reflect CPA's financial dates. For the past financial year we had a surplus of \$1,814.53, largely due to the profit of the Pre-conference Institute in Halifax. Our Newsletter expenses were carried forward to the 2013 budget (\$150). We awarded the Student Paper Award (\$500) and five Travel Bursaries (5 X \$250) for a total of \$1,750 in 2012. This is an increase to \$250 from \$200 for each Travel Bursary. We budgeted \$2550 for student awards and bursaries in June, 2013. The 2012 conference expenses were \$1,276.77 and we budgeted \$2,000 for the 2013 conference expenses. Since the Institute expenses in

Quebec City in 2013 are unknown, there are no budgeted expenses or profits for the Institute. We had \$10.70 in Associate Member dues and are budgeting for \$44 for 2013. Our bank interest was \$87.92 and we have budgeted interest of \$70 when the G.I.C. of \$5,400 is renewed. We project a deficit of \$1,466 this year. *See the SWAP Financial Statement (Jan. 1, 2012 to Dec. 31, 2012).*

Submitted by Noreen Stuckless
Secretary-Treasurer

SWAP FINANCIAL STATEMENT

SWAP FINANCIAL STATEMENT (1 January, 2012 – Dec. 31, 2012)

	REVENUE/EXPENDITURES JAN 1, 2012-DEC 31, 2012	PROPOSED BUDGET - JAN 1, 2013– DEC 31, 2013
REVENUE		
CPA Dues	\$2,946.50	\$2,900
Bank Interest	\$ 87.92 See NOTES 1	\$ 70
Institute	\$2,796.18	\$ 250 See NOTE #3
Associate Member Dues	\$ 10.70	\$ 44
TOTAL	\$5,841.30	\$3,264
EXPENDITURES		
CPA Conference Expenses	\$ 1,276.77	\$2,000
Institute	\$ 0	\$ 0
Newsletter	\$ 0 See NOTES 2	\$ 150 (For two years)
Award/Bursaries	\$1,750	\$2,550
Honorarium	\$ 1,000	\$
Administration (posting/shipping)	\$ 0	\$ 30
TOTAL	\$4,026.77	\$4,730
NET GAIN (LOSS)	\$1,814.53	\$(1,466)
Opening balance (Jan. 1, 2012)	\$11,216.03	
Closing balance (Dec. 31, 2012) \$13,030.56 Chequing (\$7,630.56) + \$5400 (G.I.C.)		
Assets 31.05.13	\$16,092.33	BEFORE 2013 EXPENSES (Approx \$4,730)
Chequing Acc't	\$10,692.33	
G.I.C. (Matures Feb. 2014)	\$ 5,400.00	

NOTE #1 G.I.C. interest; NOTE #2 Newsletter expenses paid in 2013; NOTE #3 Refund – 2012 Preconference

Submitted by Noreen Stuckless, Secretary-Treasurer, June 2013

APA DIVISION 35 (SPW) REPORT



I was unable to attend the 2012 and 2013 Division 35 Executive Meetings at APA in Orlando and Hawaii. In years I am unable to go, I would welcome sharing the duties with another SWAP member (or two). The Division 35 meetings at APA are usually the night before the convention starts and are quite exciting. There are often as many as 50 - 80 executive members around the table, many of whose work you have been reading for years! My primary duty each year is to continue to keep our membership apprised of jobs, prizes/awards, etc. that come via the Division 35 listserv. Please consider publishing your research and your reflections on teaching the psychology of women in the Division 35 APA journal *Psychology of Women Quarterly*. Also let me know if there is anything you would like me to take to Division 35 on behalf of our membership.

All the best,

Charlene Senn
Division 35 (SPW) Liaison

NOMINATIONS REPORT



Colleen has requested that people send their nominations for the SWAP Distinguished Member Award to her as soon as possible. The SWAP Distinguished Member Award is presented annually to an individual who has made distinguished, long-standing, and substantial contributions that pertain to women, gender, or related issues, in the areas of teaching, research, and/or practice. Additionally, members should send their nomination suggestions for the CPA Invited Speaker.

STATUS OF WOMEN COMMITTEE (SWC) REPORT



Dear SWAP members:

It was a great privilege to serve the Status of Women Committee as Chair this year. I am an assistant professor at Saint Mary's University in Halifax, Nova Scotia, and my grant-funded program of research examines women's occupational health and safety, specifically the return to work of women who have experienced breast cancer.

Last year, I stepped in part-way through the mandate of the Chair, Cherie Werhun. Already underway was a project, conducted by Jessica McCutcheon investigating the working and study conditions of faculty and graduate students, from a gender perspective. The results of the study were presented at this year's Convention, among them being the following:

1. Female professors have lower research output than male professors.
2. Female professors have higher levels work-related stress than male professors.
3. Female professors spend more time on childcare and less time on research activities as compared to male professors
4. Both female graduate students and female professors perceive their departments as less supportive of women having children than men
5. Female graduate students and professors have higher levels of work-family conflict as compared to male graduate students and professors

Given these findings, where do we go from here? The SWC will meet to brainstorm about recommendations and next steps resulting from this survey. It would seem that the findings of lower research output, more domestic responsibility, less departmental support regarding children, and higher stress are all linked, and could be resolved with family-friendly policies which show support for faculty and students. Given recent and highly public issues of sexist climate on campuses on both East and West coasts, campuses might be particularly open to looking inward, and our work is very timely.

Submitted by Lucie Kocum
Chair, Status of Women Committee (SWC)

STUDENT COMMITTEE REPORT



Happy autumn to my fellow women in psychology! I hope that everyone had a restful and productive summer, and that you're all ready to get back to being amazing, powerful, and world-changing!

On behalf of the student executive of SWAP, I wanted to thank all those who participated in the SWAP activities at the CPA Convention this past June. More specifically, thank you to everyone who participated in and/or supported the Feminist Speed Mentoring event we held during the Annual General Meeting. We were very happy with the event, and look forward to organizing an even better version of it next year.

We also posted our list of researchers in Canada who study issues related to the psychology of women/gender. Thank you to everyone who put in the long hours to put this list together. The list can be found at:

<http://www.cpa.ca/aboutcpa/cpasections/SWAP/feministresearchers/>. Please remember that the list is meant to be a guide. We do not know all of these researchers personally, and cannot vouch for their identities and research styles as being "feminist" (in its many forms). If you have any suggestions for the list, please feel free to let us know!

We would also like to thank all of those who nominated their supervisors for the Feminist Mentorship Award. We received many nominations, and all of them were extremely exciting and worthy of the award. Congratulations to Dr. Janelle Kwee at Trinity Western University for being an exemplary mentor to her students! Dr. Kwee inspires her students to be the best they can academically, professionally, and personally, and for this, she was awarded the Feminist Mentorship Award.

Lastly, as mentioned at the Annual General Meeting, the SWAP student executive wrote a piece on psychology's identity for Psynopsis, and it was published last summer. For those of you still searching for the link, here it is! <http://www.cpa.ca/docs/File/Psynopsis/summer2012/index.html>

We are looking forward to having another productive year as SWAP student executive. If you would like to get involved, learn more about us, or have any ideas or feedback, we would love to hear from you!

Until next time!

Taslim and the SWAP Student Executive

SWAP ARCHIVES UPDATE



SWAP Archives Find a Home at the University of Ottawa [from PSYNOPSIS – Volume 35(1)]

In 2009 the SWAP Executive approved a proposal submitted by Esther Greenglass, Sandra Pyke and Shake Toukmanian to collect, catalogue and preserve archival material relevant to the history of SWAP. To this end, the search for materials extended beyond our own files to requests for items from CPA head office, and a solicitation in the SWAP Newsletter as well as contacts with past Coordinators. Information about the maintenance of archival materials was also obtained from APA. In addition, other individuals with interests relevant to the project were incorporated into the group – Alex Rutherford, John Conway, Fran

Cherry, Karen Cohen, Jenna Mackay and the SWAP Coordinator, Carmen Poulin.

By September of 2010, over 400 individual items had been collected and catalogued in a 16 page document. The earliest items derived from 1976 and comprised materials pertaining to the founding of the Section (aka the CPA Interest Group on Women and Psychology). The most recent items stem from 2009 – the edited book of the papers presented at the 2008 Institute in Halifax. Other materials included items from Business Meetings, correspondence, items concerning the selection of Distinguished Member Award recipients, issues around the Section program at the convention, SWAP Newsletters, items relevant to SWAP institutes, various forms, and publications.

Fran Cherry and Jenna Mackay spearheaded the search for an appropriate location for our materials. In October, 2010, they met with Archivist Lucie Desjardins, of the Canadian Women's Movement Archives (CWMA) at the University of Ottawa. For various reasons, the CWMA seemed particularly suitable as a home for the SWAP archives. The Section voted its approval of this location at its business meeting in 2011. Over the next 12 months, the support of CPA Archivist, John Conway and CPA CEO Karen Cohen, was solicited and their enthusiastic support for the project was much appreciated. John's letter of May 1, 2012 endorsing the proposal was especially helpful. Karen presented the proposal to the CPA Board in June 2012 and enlisted their support. A meeting of the archives group was held at the CPA Convention and a report was presented to the Section at the June, 2012 Business Meeting by Sandra Pyke. Subsequently Carmen Poulin submitted a couple of additional boxes of materials, most items derived from the files of Teresa Janz. Fran Cherry transported all these materials from Toronto to Ottawa in the fall of 2012.

On January 8, 2013, the SWAP archives were delivered to CWMA. The ceremony for the signing of the deed of gift was attended by Fran Cherry, Lucie Desjardins, Karen Cohen and John Conway. Karen Cohen signed the agreement on behalf of CPA. [Article Reproduced from PSYNOPSIS – Winter 2013]

DISTINGUISHED MEMBER AWARD



Dr. Noreen Stuckless was awarded the 2013 SWAP Distinguished Member Award.

Dr. Carmen Poulin made the presentation on behalf of Dr. Colleen McQuarrie who was unable to attend the meeting. Dr. Poulin began her presentation with the comment that “Noreen needs no introduction as she has been a member of the Executive since 2000 and is probably the most widely recognized figure in the organization. We owe an enormous debt of gratitude to Noreen for her generosity in supporting SWAP for more than a decade.” In all of her endeavors, throughout her career, Dr. Stuckless has

expressed her enduring feminist values and in so doing has contributed immeasurably to the enhanced understanding and appreciation of the female condition. She is indeed a most worthy candidate for this Award!

A recurring theme in Dr. Stuckless’ research is a focus on violence against women and children. Her PhD dissertation – The influence of anger, perceived injustice, revenge, and time on the quality of life of survivor-victims –examined how parents are affected when their children are murdered or killed by drunk drivers. Her minor area paper reviewed the influence of patriarchy, power, and estrangement on wife battering and uxoricide. Her post-doctoral work at the University of Toronto, Department of Psychiatry under the supervision of Dr. Brenda Toner looked at the topic of sequential victimization. Her book, coauthored with Desmond Ellis explored the concepts of mediating and negotiating marital conflict. She has been a co-investigator in numerous successful grant proposals. She has many publications in refereed journals spanning such topics as the impact of genetic testing, domestic violence, childhood sexual abuse, postpartum depression, and feminist issues in research methodology. As a long time contract faculty member of the Psychology Department at York University, Noreen has taught a variety of courses including, social psychology, research methods, and the psychology of the family. Since 1997 York University undergraduates have benefited from exposure to her Psychology of Women class, commenting how Dr. Stuckless is a wonderful, amazing, excellent, engaging, interesting, knowledgeable, warm, compassionate, nice, encouraging, instructor. In addition to her teaching at York, she has taught Sex Roles and Behaviours at the University of Toronto for many years. She also served as the Director of Undergraduate Studies for seven years advising students and coordinating the undergraduate curriculum. In all of her endeavors, throughout her career, Dr. Stuckless has expressed her enduring feminist values and in so doing has contributed immeasurably to the enhanced understanding and appreciation of the female condition.

Submitted by Lynda Ross
SWAP Coordinator

AWARD FOR CONTRIBUTIONS TO THE FIELD OF WOMEN AND FEMINIST PSYCHOLOGY



The 2013 Award for Contributions to the Field of Women and Feminist Psychology was presented to Dr. Carmen Poulin.

Dr. Poulin is another of our valuable SWAP executive members who also really needed no introduction! She is a Professor of Psychology and Women's Studies at the University of New Brunswick (UNB). Carmen has been a longstanding and active member of SWAP. Most recently she has filled the positions of the chair-elect, chair, and has now completed her term as past-chair for SWAP. She feels strongly about SWAP's amazing collection of strong

and inspiring women and that such an organisation as ours must be cherished, celebrated, and fostered.

Submitted by Lynda Ross
SWAP Coordinator

FEMINIST MENTORING AWARD



Every year, the SWAP Student Executive invites nominations for the SWAP Feminist Mentoring Award. For the year 2012-2013, we received many inspiring, amazing and encouraging nominations from students across the country. These nomination packages are a testament to the hard work and (often difficult to achieve) balance that feminist mentors strive for in their work. While not all nominees could be winners, we would like to congratulate all those who were nominated for their formidable work.

This year's winner is Dr. Janelle Kwee, from Trinity Western University. From the information included in Dr. Kwee's nomination package, from the several students who nominated her, it is clear that she exemplifies work and personal life balance, and encourages her students to find a balance as well. She is compassionate, generous, and inspires those around her to work hard to achieve their goals. In a time when it is extremely difficult for women to find balance in the different facets of their lives, it is extremely encouraging to have feminist psychologists like Dr. Kwee to be a role model for those around her.

Thank you to Dr. Kwee, to all those who were nominated, and to all the students who participated in the nomination process.

Sincerely,
Taslim Alani and the SWAP Student Executive

SWAP STUDENT BURSARY & TRAVEL BURSARY AWARDS



The SWAP Student Paper Award and five or more Travel Bursaries are awarded each year to students presenting at the convention of the Canadian Psychological Association (CPA) or at a SWAP Pre-conference Institute. This year, because of the high number of excellent entries for the Student Paper Award competition, we awarded both a \$550 Student Paper Award and a \$300 Student Paper Award – First Runner up. In addition, we were able to offer seven \$250 Travel Bursaries. Notices for the 2013 SWAP Student Awards were published in the SWAP newsletters and sent electronically to all Canadian universities with a chair in psychology and additional universities with psychology programs identified by CPA. The Student Paper Awards were decided by adjudicators with different training and interests; authors' identities and affiliations were masked.

The winner of the 2013 SWAP Student Paper Award is Sara Crann. The winning paper, entitled "*The Experience of Resilience for Survivors of Intimate Partner Violence: A Phenomenological Inquiry*" was presented at the 2013 CPA annual convention. A summary of the paper appears in this issue of the newsletter. Ms. Crann is a graduate student in the Applied Social Psychology Program in the Psychology Department at the University of Guelph, supervised by Dr. Paula Barata, who co-authored the paper. The \$500 award was presented to Ms. Crann at the SWAP annual business meeting at the CPA convention. The reviewers were unanimous in their praise of this paper, which they described as "refreshing, and an important step toward a more authentic understanding of resilience"; and "excellent, innovative, and thorough". They noted the contributions of the paper which, by employing an exploratory qualitative approach rooted in lived experiences, expands our understanding of resilience as a time consuming, difficult process, that can co-exist with mental health issues. The paper is a valuable addition to research and practice with women who experience intimate partner violence.

Because of the high number of excellent entries, a SWAP Student Paper Award – First Runner Up was awarded for the first time. The winners were Sachiko Nagasawa, Lianne Trachenberg and Fiona Downie (University of Toronto) for their paper, "*Embodied Journeys of Older Women: Body as a Physical Site*", which is co-authored by Dr. Niva Piran. The reviewers described the paper as "theoretically innovative" and "methodologically rigorous". Students applying for a Travel Bursary described how their work is relevant to the psychology of women and/or feminism. Each of the submissions met criteria; the seven Travel Bursaries were awarded based on distance to the convention. The 2013 Travel Bursary winners are: Taslim Alani (Lakehead University), Sandra Dixon (University of Calgary), Jessica McCutcheon (University of Saskatchewan), Hillary McBride (Trinity Western University), Brianna O'Neil (University of Windsor), Emily Polak (University of British Columbia), and Courtney Williston (University of Windsor).

All students who present at the CPA annual convention including the SWAP pre-conference institute are eligible to apply for the Student Paper Award and Travel Bursary. I encourage students to consider presenting at this year's CPA convention and applying for the Student Paper Award and Travel Bursary. Submissions to the 2014 CPA convention are due on December 1; applications for 2014 SWAP student awards are due Friday, April 19, 2014. If you know students who are doing feminist research please encourage them to apply for SWAP's student awards, especially the Student Paper Award. All entrants in the Student Paper Award competition, and all Travel Bursary winners, receive one year FREE membership in SWAP. Applications will appear in a future SWAP newsletter and on the SWAP website. Donations to support student awards can be made at any time. Your generosity helps us support students presenting their work with awards that compare favourably to those offered by other CPA sections. (Submitted by: E.B. Brownlie; SWAP Student Awards Coordinator)

SWAP WINNING STUDENT PAPER



The Experience of Resilience for Survivors of Intimate Partner Violence: A Phenomenological Inquiry (By: Sara Crann)

There is a small but growing body of psychological research examining women's resilience following intimate partner violence (IPV). This research is almost entirely quantitative and has focused on examining protective factors for positive functioning and adaptation following abuse. In these studies, resilience is typically measured as the absence of psychopathology (e.g., Bradley, Schwartz, & Kaslow, 2005; Meadows, Kaslow, Thompson, & Jurkovic, 2005). While invaluable knowledge about the diversity and abundance of protective factors for resilience has resulted from this work, measuring resilience as the absence of psychopathology fails to acknowledge the social and cultural context in which the development and expression of resilience is embedded and reduces the complexity of the phenomenon (Almedom & Glandon, 2007; Ungar, 2004). Qualitative approaches to the study of resilience and thriving allow researchers to grapple with these conceptual and methodological issues (Massey, Cameron, Ouellette, & Fine, 1998). Therefore, the purpose of the current research was to examine women's lived experience(s) of resilience using a qualitative phenomenological approach in an effort to expand our approach to the study of resilience in this population and enhance the theoretical utility and applicability of resilience research.

Method

Sixteen adult women (ages 18-55) from diverse ethnic/cultural and economic backgrounds who were currently and/or had previously experienced abuse by an intimate partner(s) participated in semi-structured interviews. Women reported multiple and diverse experiences of abuse ranging from less than one year to 20 years. Women were asked to tell the story of how they moved through their abuse and how they have or have not experienced resilience related to their abuse.

The aim of phenomenological inquiry is to create a description of the lived experience of a phenomenon without prior assumptions. The participant's description is taken to directly represent the rich experience of the participant (Holloway, 1997), interwoven with their personal, interpersonal, and social realities (Moustakas, 1994). Data analysis was guided by Colaizzi's (1978) method, which is grounded in the theoretical and epistemological assumptions of phenomenology. This method was used as a guiding and iterative process rather than a rigid set of analytical steps. First, aspects that seemed relevant to the phenomenon of resilience were extracted from each transcript. Each extracted statement was then reviewed to help make sense of it in the participant's own terms. These meanings were then clustered into common patterns and themes. The clusters of themes were compared back to the data to confirm and validate the patterns (Holloway, 1997).

Analysis and Discussion

Central to the women's experiences of resilience was a series of cognitive, emotional, and behavioural shifts that occurred throughout the abusive relationship, during the process of leaving, and after the relationship or abuse had ended. The concept of shifts is being used as an organizational device to represent a change in the way a woman was thinking, feeling, or behaving with regards to herself, the abuser, the abuse, a relationship, or some other aspect of her life. Shifts occurred in three distinct, yet highly related domains, which have been conceptualized as 'toward resistance', 'in the experience of control', and 'toward positivity.' Shifts occasionally occurred abruptly, but more often developed gradually over time. Women often experienced multiple shifts in one area, for example, a cognitive shift and several subsequent behavioural shifts toward resistance, which individually may seem small and inconsequential, but when aggregated reveal a more robust shift toward resistance.

Shifts toward resistance reflect women's active capacity to oppose, avoid, and push back against the abuse and its negative effects (e.g., mental health difficulties), the abusive relationship, and the broader social environment that upholds social and cultural norms of violence against women. Shifts toward resistance occurred most often while the abusive relationship was intact and became less frequent once the abuse, fear of abuse, or abusive relationship ended. Shifts in the experience of control reflect the amount of influence women felt they had over specific aspects or overall outcomes of their lives, relationships, and other experiences. Shifts related to control were seen as both positive and negative and occurred throughout the relationship and the process of leaving. Finally, shifts toward positivity reflect women's acknowledgment of progress or positive change in their lives. These shifts occurred most often after the abuse or the abusive relationship was over and women were starting to rebuild their lives. Shift experiences were often connected, as shifts in other domains often facilitated a shift toward positivity.

The findings of this study suggest that women who have experienced IPV often have different understandings and experiences of resilience, including multiple ways to describe their own experiences. Women spoke explicitly about the personalized nature of resilience; how "it's [resilience] different for everybody and for every situation." The majority of women spoke about the time consuming and difficult nature of developing and maintaining resilience. As an ongoing process, women spoke about experiencing mental health issues while simultaneously experiencing resilience, suggesting that these experiences are not mutually exclusive. Finally, women made suggestions for how to better help other women experiencing abuse that were related to improving social systems. Participants' attention to social systems within the context of a discussion on resilience highlights the importance of viewing resilience within the broader social and cultural context, rather than through an entirely intrapsychic lens.

The complex, dynamic, and context-dependent nature of resilience for survivors of IPV has significant implications for resilience research in this population. Considering that resilience is often measured as the absence of psychopathology, the findings of this study highlight the importance of using appropriate indicators of resilience to improve the validity of the research. Furthermore, consideration for women's understandings and experiences of resilience in research design will improve the translation of research into useful and relevant clinical and policy applications.

References

- Almedom, A. M., & Glandon, D. (2007). Resilience is not the absence of PTSD any more than health is the absence of disease. *Journal of Loss & Trauma*, 12, 127-143. doi: 10.1080/15325020600945962.
- Bradley, R., Schwartz, A.C., Kaslow, N.J. (2005). Posttraumatic stress disorder symptoms among low-income, African-American women with a history of intimate partner violence and suicidal behaviors: Self-esteem, social support, and religious coping. *Journal of Traumatic Stress*, 685-696. doi:10.1002/jts.20077.
- Colaizzi, P.F. (1978). Psychological research as the phenomenologist views is. In R.S. Valle and M. King (Eds.), *Existential-phenomenological alternatives for psychology* (pp. 48-71). New York: Oxford University Press.
- Holloway, I. (1997). *Basic concepts for qualitative research*. London: Blackwell Publishing.
- Massey, S., Cameron, A., Ouellette, & Fine, M. (1998). Qualitative approaches to the study of thriving: What can be learned? *Journal of Social Issues*, 54, 337-355.
- Meadows, L.A., Kaslow, N.J., Thompson, M.P., & Jurkovic, G.J. (2005). Protective factors against suicide attempt risk among African American women experiencing intimate partner violence. *American Journal of Community Psychology Special Issue: Theoretical and Methodological Innovations in Research on Intimate Partner Violence*, 36, 109-121. doi: 10.1007/s10464-005-6236-3.
- Moustakas, C. (1994). *Phenomenological research methods*. Thousand Oaks, CA: Sage.
- Ungar, M. (2004). A constructionist discourse on resilience: Multiple contexts, multiple realities among at-risk children and youth. *Youth & Society*, 35, 341-365.

CALL FOR ABSTRACTS

**AWP 2014 – National Association for Women in Psychology Conference
The Personal is Political: The Lived Experience of Disability
March 6-9, 2014 – Columbus, OH**

The theme of the 2014 AWP Conference - The Personal is Political: The Lived Experience of Disability - revolves around how disability interfaces with multiple identities and impacts issues that many women navigate including reproductive rights, diversity, body image, beauty, violence, sexuality, aging and mental health. We seek to unpack the social construction of disability and understand it as a transcendent, universal and personal diversity factor that impacts women and our communities across the lifespan. Additionally, we invite any research or presentation that fits within the framework of feminist psychology and study.

Submissions will be accepted for pre-conference workshops, discussion sessions, symposia, workshops, academic papers, and poster sessions associated with the conference theme and/or feminist psychology. **Proposals should be submitted by October 14, 2013.**

For conference information or to submit a proposal, please go to www.awp2014.com.

CALL FOR PROPOSALS

American Psychological Foundation - Request for Proposals Henry David Grants

About the American Psychological Foundation (APF):

APF provides financial support for innovative research and programs that enhance the power of psychology to elevate the human condition and advance human potential both now and in generations to come. Since 1953, APF has supported a broad range of scholarships and grants for students and early career psychologists as well as research and program grants that use psychology to improve people's lives. APF encourages applications from individuals who represent diversity in race, ethnicity, gender, age, disability, and sexual orientation.

About the Henry David Research and Travel Grants:

The American Psychological Foundation's Henry David Fund was established to support young psychologists with a demonstrated interest in the behavioral aspects of human reproductive behavior or an area related to population concerns. The fund sponsors two grants annually:

- The Research Grant provides up to \$1,500 for support of ongoing research in behavioral aspects of population studies or human reproductive behavior.
- The Travel Grant provides up to \$1,500 to support travel related to research on human reproductive behavior and population studies or attendance at an international or regional congress. Individuals may apply for one or both grants.
- Research Grant: up to \$1,500 annually
- Travel Grant: up to \$1,500 annually

Eligibility Requirements

Applicants must:

- Be graduate students conducting dissertation research or early career researchers with not more than seven years postgraduate experience
- Have demonstrated interest in human reproductive behavior or related population concerns
- Open to applicants in all relevant disciplines who have a demonstrated psychological approach to their work, with preference given to psychologists

Proposal Requirements

- Completed application form
- One to two page detailed research plan
- Current CV highlighting relevant experience
- Two letters of recommendation
- One to two page essay demonstrating an active interest in human reproductive behavior or in population studies

Submission Process and Deadline:

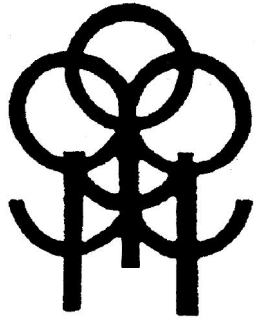
Submit a completed application online at <http://forms.apa.org/apf/grants/> by **February 15, 2014**.

NEWSLETTER SUBMISSIONS

I am seeking detailed submissions for the following columns for the January 2014 SWAP Newsletter:

1. **MEMBERS' RECENT PUBLICATIONS.** This column is for members to highlight their recent publications. If you have published an article/book/book chapter in the last year this is your chance to let the SWAP members know about it. Please submit the reference and a 250-500 word abstract of your publication to me.
2. **METHODOLOGICAL REVIEW.** If you have read or written an article using a research method that you think is particularly interesting and/or innovative, or has been used in an innovative fashion (e.g., to access a difficult to access population, administered in a unique way, etc.), please consider writing a review of that article. The goal is to highlight research methodologies that may be useful to members when they are developing new research projects. For example (but not limited to), discourse analysis, conversation analysis, client representative case study, structural equation modeling, a multiple regression conducted in a unique way, mixed methods, etc.
3. **CONFERENCE REVIEWS.** If you have attended a conference since the last Newsletter and there were presentations that you think would be of interest to our members, please consider writing a brief review (250-500 words) of the conference/presentation(s). This includes any presentations that you may have made at a recent conference. Please include the author(s) of the research, the name of the project, the professional affiliation of the author(s), and the name of the conference where this research was presented.
4. **UPCOMING CONFERENCES.** If you are aware of an upcoming conference that you think the other members would like to know about, please email me the details of the conference.
5. **RECENTLY DEFENDED DISSERTATIONS & THESES.** If you have a student or you are student who has recently defended a dissertation or thesis (in the last year), please have the student send me a short abstract (about 200-300 words), the university affiliation and the name of the student's supervisor.
6. **FELLOWSHIPS OR JOB OPPORTUNITIES.** If you are aware of any fellowships or job opportunities that would be of interest to our members, please send me the details of them.
7. **CALL FOR PAPERS/ABSTRACTS.** If you have received a call for papers/abstracts for conferences and/or publications please send me the details.
8. **BOOK REVIEW.** If you have read a book recently that you think would be of interest to SWAP Members, please write a book review (length at your discretion) and send it to me (jessica.mccutcheon@usask.ca). Include: Title of the book, author(s), publication date, publisher, and your name.

Submission Deadline for January's Newsletter is January 15, 2014



SWAP ASSOCIATE MEMBERSHIP APPLICATION FORM

Name: _____

Mailing Address: _____

Email address: _____

Annual Dues:

Please check one:

Associate Member	\$21.40
Sustaining Associate Member	\$32.10
Student Associate Member	\$5.35

Associate Members of SWAP receive our newsletter three times a year, and enjoy full rights and privileges of membership (except for the right to nominate or hold office). The membership year extends from January 1 to December 31.

According to section bylaws, Associate Membership is open to those persons who are not members of CPA, but who are involved in work or study relevant to the purposes of the Section on Women and Psychology. Please describe briefly how your interests relate to women and psychology:

Signature: _____ Date: _____

Please mail this form and cheque (made payable to CPA/SWAP) to Dr. Lana Stermac, Department of Applied Psychology & Human Development, University of Toronto/OISE, 252 Bloor Street West, 9-199, Toronto, Ontario, M5S 1V6; E-mail: lsternac@oise.utoronto.ca